

The background of the entire image is a traditional East Asian painting. It features a textured gold background. Two birds, possibly sparrows or finches, are perched on dark, gnarled branches. One bird is in the upper right, facing left, and the other is in the lower left, facing right. The branches are adorned with several large, stylized white flowers with multiple layers of petals, and smaller, simpler white flowers. The overall style is reminiscent of traditional Chinese or Japanese ink and wash painting, but with a gold leaf background.

THE SILK ROAD

ROSENSTIELS

LONDON — 1880



THE SILK ROAD

Down the centuries traveller's tales of the legendary Silk Road have inspired romantic images in our minds of distant lands, exotic cultures and customs.

This ancient network of trade routes connected East and West and amongst other wonders brought luxurious Chinese silks, fabulous porcelain, perfumes and spices to an eager European market. But the exchange of goods went in both directions and included religion, culture and science.

From glorious Venice to exotic Peking our Silk Road Collection is inspired by this epic journey and blending of cultures and offers an enticing glimpse into this vanished world and it's remarkable treasures.

Prints are available to order through our website, by phone or email.

+44 (0)20 7352 3551
sales@rosenstiels.com

Full information on each image can be found on our website, including the artist's name, artist's biography and all available options for the image.

See our entire collection and pricing options on our website.

WWW.ROSENSTIELS.COM

Our vast knowledge and love of art in all its forms, drive our desire to help create beautiful places and spaces with art.







DC: DXP10201 (Paper Size 20 x 30 in | 50 x 75 cm)



DC: DXP10202 (Paper Size 20 x 30 in | 50 x 75 cm)



DC: DXP10203 (Paper Size 20 x 30 in | 50 x 75 cm)



DC: DXP10204 (Paper Size 20 x 30 in | 50 x 75 cm)



DC: DXP10205 (Paper Size 20 x 30 in | 50 x 75 cm)



DC: DXP10206 (Paper Size 20 x 30 in | 50 x 75 cm)



DC: DXP10207 (Paper Size 20 x 30 in | 50 x 75 cm)



DC: DXP10208 (Paper Size 20 x 30 in | 50 x 75 cm)

Embroidered Silk Robe, Front



SEC: GM2750 (Paper Size 62 x 42 in | 157 x 107 cm)

Embroidered Silk Robe, Back



SEC: GM2751 (Paper Size 62 x 42 in | 157 x 107 cm)

Embroidered Silk Robe, Front



SEC: GM2745 (Paper Size 42 x 50 in | 107 x 127 cm)

Embroidered Silk Robe, Back

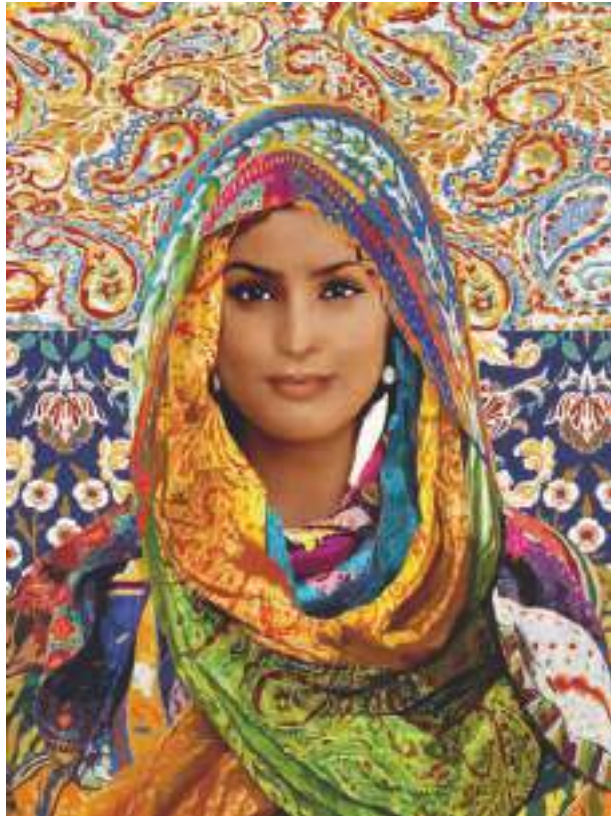


SEC: GM2746 (Paper Size 42 x 50 in | 107 x 127 cm)

H A N F U

These images depict designs for Chinese robes. Hanfu is the traditional dress of the Han Chinese people. The term Hanfu derives from the Book of Han, which says, “then many came to the Court to pay homage and were delighted at the clothing style of the Han.”

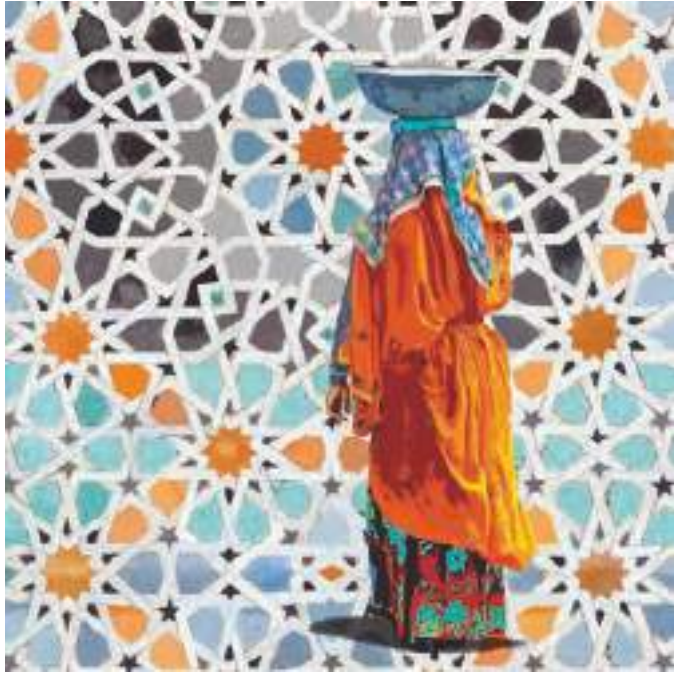




GCL: XT44191 (Ratio 3:4)



GCL: XT44192 (Ratio 3:4)



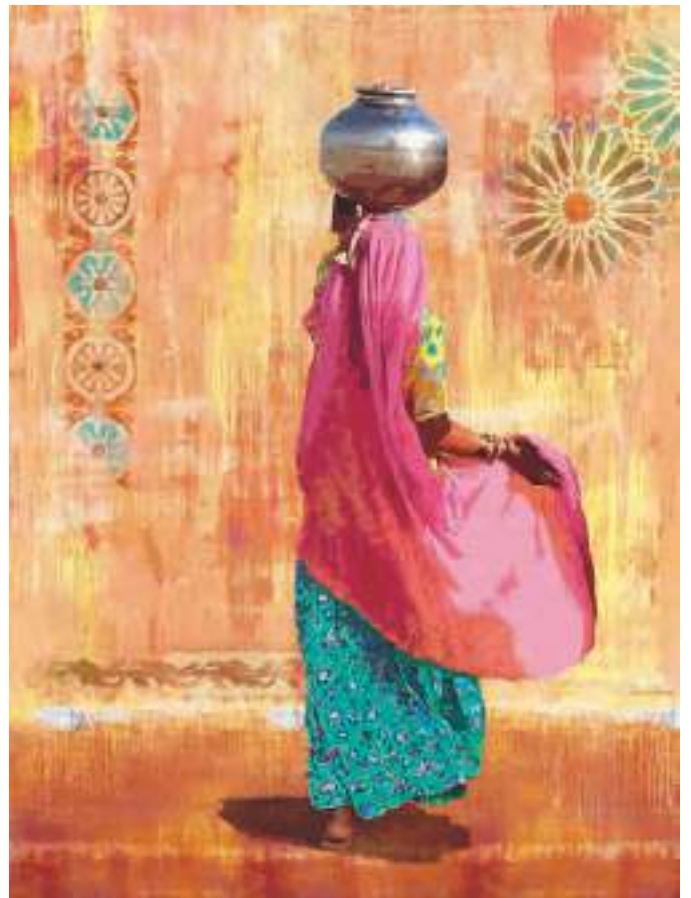
GCL: XL24419 (Ratio 1:1)



GCL: XL24420 (Ratio 1:1)



GCL: XT44776 (Ratio 3:4)



GCL: XT44777 (Ratio 3:4)



ORIENTAL TRANSITIONS

*A subtle and artful
blending of traditional
and contemporary motifs
creates a decorative
hybrid. New and old in
perfect harmony.*



GCL: RX84553 (Ratio 2:3)



GCL: RX84554 (Ratio 2:3)



GCL: RL24177 (Ratio 1:1)



GCL: RL24373 (Ratio 1:1)



GCL: RL24178 (Ratio 1:1)



GCL: RL24374 (Ratio 1:1)



GCL: RL24032 (Ratio 1:1)



GCL: RL24033 (Ratio 1:1)



GCL: RT44001 (Ratio 3:4)



GCL: RT44002 (Ratio 3:4)

KINTSUGI

*The centuries-old Japanese art of
repairing broken pottery
with gold to create a new and
beautiful object.*

WAGARA

Intricate Japanese Wagara patterns often take their inspiration from geometric and natural forms with specific meanings. Although traditional they have a highly decorative contemporary appeal, especially in neutral tones.



GCL: RL23654 (Ratio 1:1)



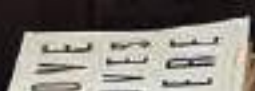
GCL: RL23655 (Ratio 1:1)



GCL: RL24135 (Ratio 1:1)



GCL: RL24136 (Ratio 1:1)





GCL: XL24331 (Ratio 1:1)



GCL: XL24332 (Ratio 1:1)



GCL: RH2339 (Ratio 4:5)



GCL: RH2340 (Ratio 4:5)



GCL: RX82724 (Ratio 3:2)



GCL: RX82726(Ratio 3:2)



OE: X2129 (Paper Size 12 x 12 in | 30 x 30 cm)
GCL: XL21082 (Ratio 1:1)



OE: X2130 (Paper Size 12 x 12 in | 30 x 30 cm)
GCL: XL21083 (Ratio 1:1)



GCL: XL24632 (Ratio 1:1)



GCL: XL24633 (Ratio 1:1)



GCL: XL24059 (Ratio 1:1)



GCL: XL24060 (Ratio 1:1)







DC: DXX10200 (Paper Size 20 x 16 in | 50 x 40 cm)

This tapestry design from 1844 is attributed to Jean-Baptiste-Amédée Couder. By introducing these exotic influences, the tapestry contributed to a revival of the decorative arts in France in the 1840s.



OE: SPT8789 (Paper Size 18 x 24 in | 46 x 60 cm)

GCL: RT43306 (Ratio 3:4)

Ganesh Sabala

The elephant headed deity Ganesh, honoured
Hindu god of good luck and wisdom.



GCL: RH2476 (Ratio 4:5)



GCL: RH2477 (Ratio 4:5)



GCL: RH2478 (Ratio 4:5)



GCL: RH2479 (Ratio 4:5)



GCL: RT44281 (Ratio 3:4)



GCL: RT44282 (Ratio 3:4)



GCL: RT44283 (Ratio 3:4)



GCL: RT44284 (Ratio 3:4)





DC: DXD10194 (Paper Size 35 x 35 in | 90 x 90 cm)



DC: DXD10195 (Paper Size 35 x 35 in | 90 x 90 cm)



DC: DXI10196 (Paper Size 14 x 42 in | 35 x 105 cm)



DC: DXI10197 (Paper Size 14 x 42 in | 35 x 105 cm)



GCL: XL24634 (Ratio 1:1)

Decorative Luxe

Come to faraway lands of elaborately patterned ancient tiles, exotic chinoiserie motifs and trembling cherry blossom, all richly embellished with precious gold.



DC: DXA10230 (Paper Size 10 x 10 in | 25 x 25 cm)



DC: DXA10235 (Paper Size 10 x 10 in | 25 x 25 cm)



DC: DXA10234 (Paper Size 10 x 10 in | 25 x 25 cm)



DC: DXA10233 (Paper Size 10 x 10 in | 25 x 25 cm)



DC: DXC10209 (Paper Size 27 x 27 in | 70 x 70 cm)



DC: DXC10210 (Paper Size 27 x 27 in | 70 x 70 cm)





DC: DXC10211 (Paper Size 27 x 27 in | 70 x 70 cm)



DC: DXC10212 (Paper Size 27 x 27 in | 70 x 70 cm)





DC: DXI10198 (Paper Size 14 x 42 in | 35 x 105 cm)



DC: DXI10199 (Paper Size 14 x 42 in | 35 x 105 cm)



GCL: RH2051 (Ratio 4:5)



GCL: RH2052 (Ratio 4:5)



GCL: RX82582 (Ratio 3:2)



OE: X5348 (Paper Size 20 x 20 in | 50 x 50 cm)
GCL: XL23373 (Ratio 1:1)




OE: X5349 (Paper Size 20 x 20 in | 50 x 50 cm)
GCL: XL23374 (Ratio 1:1)



GCL: XW71472 (Ratio 2:1)



A traditional Chinese Guóhuà painting depicting a flowering branch. The branch features several large, five-petaled pink blossoms with prominent stamens and green leaves. The leaves are rendered with dark green ink outlines and some areas of light green pigment. The background is a plain, light cream color. The painting style is minimalist, focusing on the natural forms and colors of the flora.

Guóhuà is an ancient traditional style of Chinese painting. Using a similar technique to calligraphy the brushes are dipped in black ink or coloured pigment to create beautifully observed and often minimal scenes from nature.

To be in nature is to witness a thousand miracles.

— Ancient Chinese poet



DC: DXT10240 (Paper Size 24 x 18 in | 60 x 45 cm)



DC: DXT10242 (Paper Size 24 x 18 in | 60 x 45 cm)



DC: DXT10241 (Paper Size 24 x 18 in | 60 x 45 cm)



DC: DXT10243 (Paper Size 24 x 18 in | 60 x 45 cm)



DC: DXG10236 (Paper Size 20 x 40 in | 50 x 100 cm)



DC: DXG10237 (Paper Size 20 x 40 in | 50 x 100 cm)

*A good traveller has no fixed plans
and is not intent on arriving.*

— Lao Tzu, ancient Chinese philosopher and writer



DC: DXI10238 (Paper Size 14 x 42 in | 35 x 105 cm)



DC: DXI10239 (Paper Size 14 x 42 in | 35 x 105 cm)





GCL: XT45081 (Ratio 4:3)



GCL: XT45082 (Ratio 4:3)



GCL: XT45083 (Ratio 4:3)



GCL: XT45084 (Ratio 4:3)





DC: DXU10230 (Paper Size 24 x 32 in | 60 x 80 cm)



DC: DXU10231 (Paper Size 24 x 32 in | 60 x 80 cm)



GCL: RT45063 (Ratio 4:3)



NATURAL

SIMPLICITY

The fragile beauty of nature, so perfectly
conveyed with the artist's delicate brush.



GCL: RT45064 (Ratio 3:4)



GCL: RT45065 (Ratio 3:4)

Unfolding Worlds

Although the origin of traditional Oriental folding screens was practical - to give privacy, divide rooms and protect from draughts they are far more than just a piece of furniture. They magically transform the atmosphere of any space and draw us into miniature landscapes with their unfolding worlds of swirling morning mists, elegant cranes and fragile groves of blossom.





Folding screens were also used at tea ceremonies, outdoor processions, backgrounds for concerts or dances and religious ceremonies. The type of folding varied according to its function with small two-fold screens being used for tea ceremonies, while larger, gold-leaf screens with up to eight folds served as atmospheric backdrops for dancing and entertaining.

FLORA AND FAUNA

*Intricate illustrations
depict rare plants,
birds and scenes in
stunning detail.*



GCL: RT42059 (Ratio 3:4)



GCL: RT42060 (Ratio 3:4)



SEC: GM1106 (Paper Size 40 x 16 in | 102 x 40 cm)



SEC: GM1138 (Paper Size 40 x 20 in | 102 x 50 cm)



SEC: GM1077 (Paper Size 34 x 19 in | 86 x 48 cm)

*I did not write half of what I saw,
for I knew I would not be believed.*

*— Marco Polo, speaking of his
travels on the Silk Road*





SEC: GM1326 (Paper Size 36 x 24 in | 90 x 60 cm)



SEC: GM1191 (Paper Size 34 x 22 in | 86 x 56 cm)

It was from Venice that Marco Polo, himself a Venetian, set off on his famous expedition to the east in 1271, returning in 1295 with stories about eastern cultures, peoples and traditions that were considered unbelievable by contemporary audiences.



SEC: GM4172 (Paper Size 20 x 16 in | 50 x 40 cm)



HIDDEN TREASURES

Sogdia or Sogdiana was an ancient Persian civilization that at different times included territory located in present-day Kazakhstan, Tajikistan, and Uzbekistan. The Sogdians, established a trading network across the 1500 miles from Sogdiana to China providing a key connection for the silk road's trading.







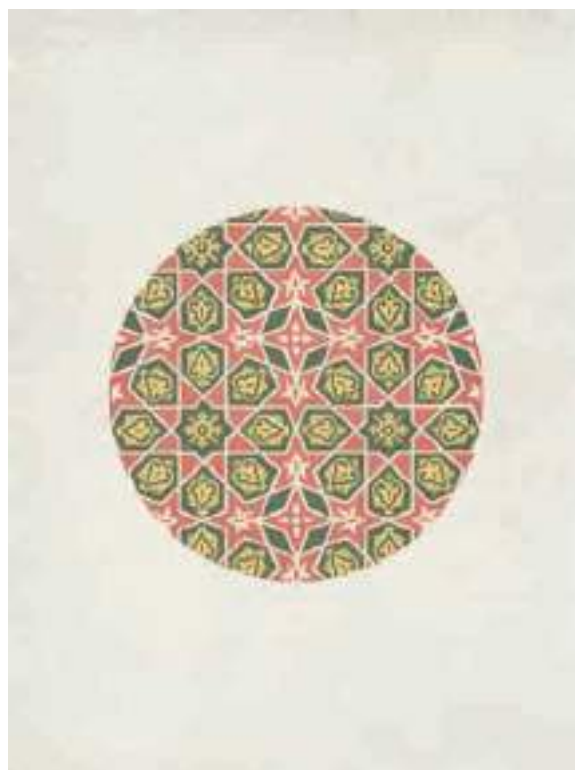
GCL: RT45066 (Ratio 3:4)



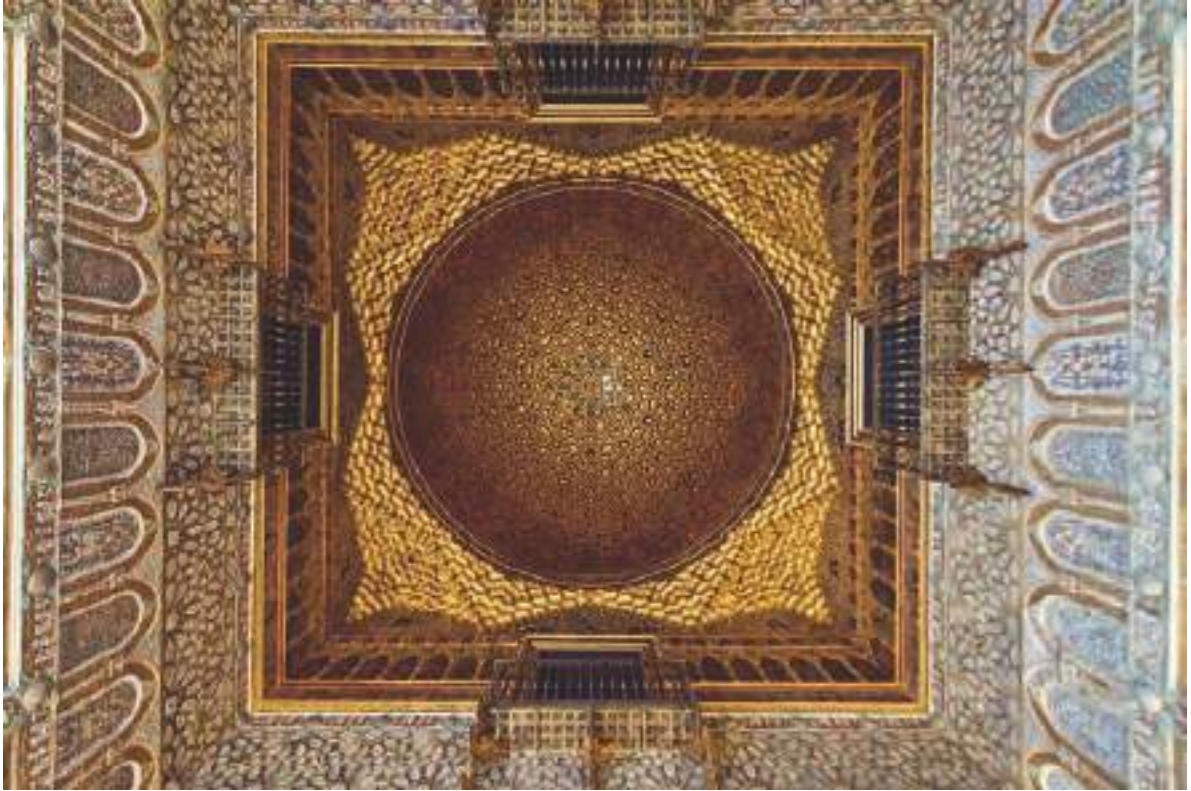
GCL: RT45067 (Ratio 3:4)



GCL: RT45068 (Ratio 3:4)



GCL: RT45069 (Ratio 3:4)



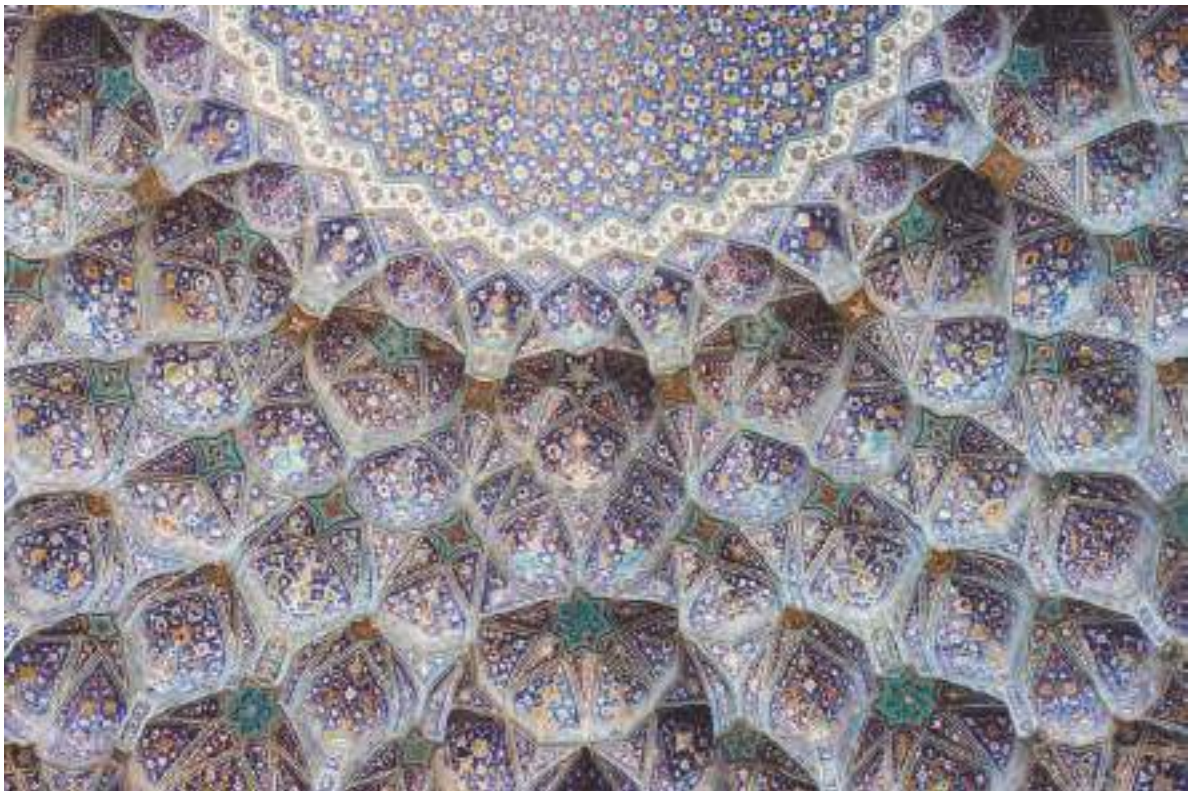
GCL: RX82931 (Ratio 3:2)

*The real voyage of discovery consists not in seeking
new landscapes, but in having new eyes.*

— Marcel Proust



GCL: RX85068 (Ratio 3:2)



GCL: RX85069 (Ratio 3:2)



GCL: RX85022 (Ratio 3:2)



GCL: RX85023 (Ratio 3:2)



A land of Far Pavilions...



GCL: RX85020 (Ratio 3:2)

When Diana Vreeland enthused that pink was the navy blue of India she understood that a passion for vibrancy, colour and life permeates every aspect of this extraordinary subcontinent.

The kaleidoscopic richness of teeming markets and the romance of intricately inlaid marble pavilions captured in dawn light are a fitting conclusion to our journey along the Silk Road.



GCL: RX85027 (Ratio 2:3)

THE PALACE
OF THE WINDS







GCL: RT45107 (Ratio 3:4)

*Built in 1799, Hawa Mahal “The Palace of Winds”
is situated in Jaipur, the Pink City of India.
Made with striking red sandstone, the structure
sits on the edge of the City Palace.*



GCL: RX85017 (Ratio 2:3)



GCL: RX85018 (Ratio 2:3)



MALCOLM SANDERS

Malcolm Sanders was born in May 1961. He works from London, where he lives with his wife and son, and has seen a very enthusiastic response to his striking and atmospheric creations. As an artist, his overriding aim is to create paintings that reach out to the viewer, creating a powerful sense of mood or place.

After running several fine art galleries, Malcolm Sanders spent the greater part of his professional life working as an art director and artist's agent, and began producing his own work only in recent years, beginning with photography and then experimenting with other media.

Coastal subjects are a recurrent theme, and Malcolm Sanders believes that the ocean has a way of cleansing the spirit and reconnecting us with the innocence of childhood.

In the coming years he plans to explore other techniques and subjects, seeking always to find fresh ways of representing the world around us. He travels extensively and finds that every new experience can provide invaluable inspiration for his work.



GCL: RT44871 (Ratio 3:4)



GCL: RT44872 (Ratio 3:4)



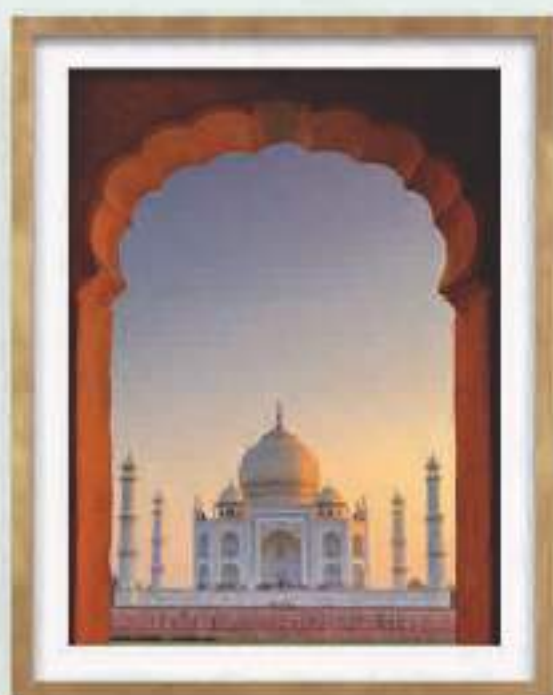
GCL: RC51773 (Ratio 1:3)



GCL: RC51774 (Ratio 1:3)



GCL: RC51775 (Ratio 1:3)

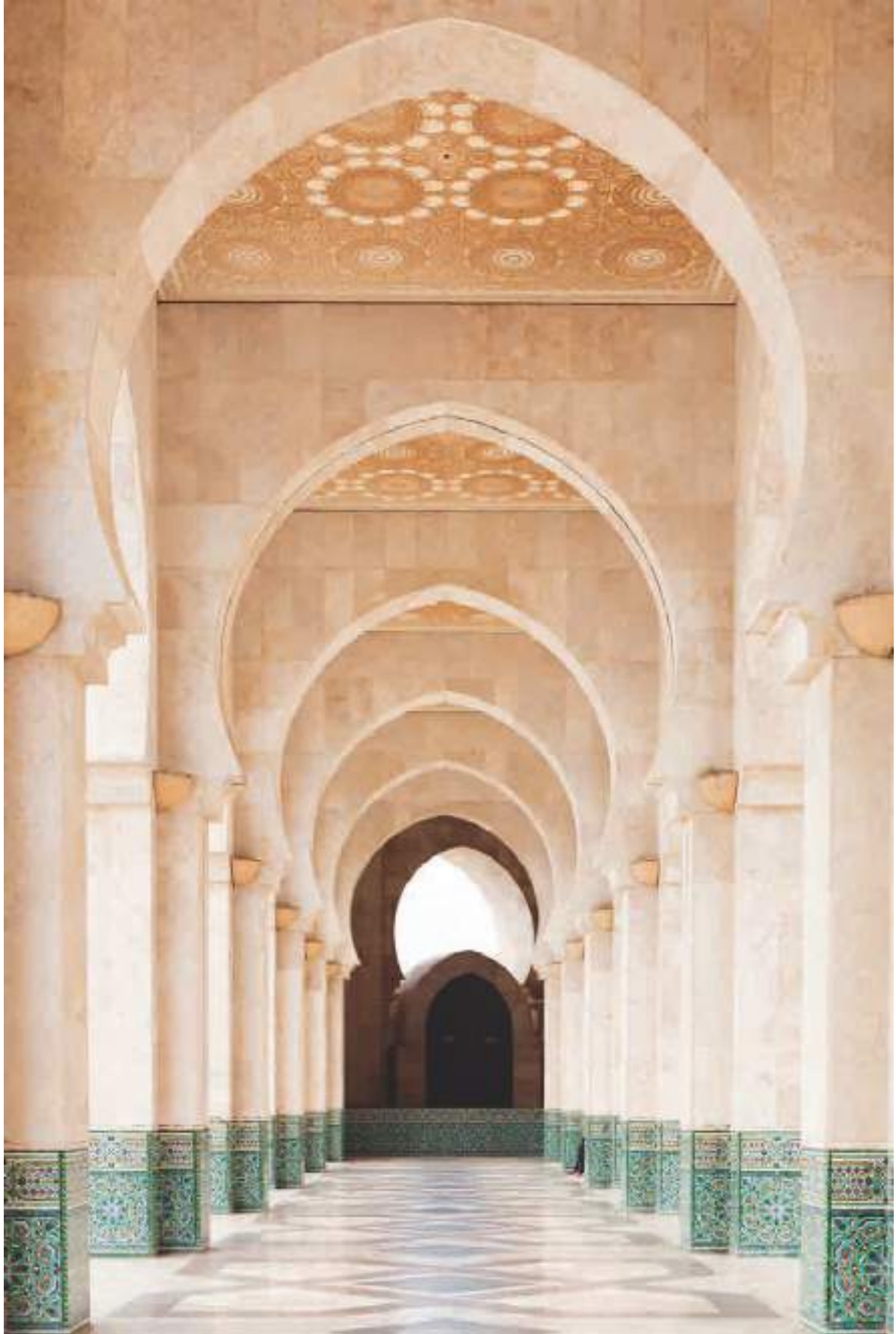




GCL: RX85028 (Ratio 2:3)



GCL: RX85026 (Ratio 2:3)



GCL: RX85019 (Ratio 2:3)



GCL: RX85021 (Ratio 3:2)

TAJ MAHAL

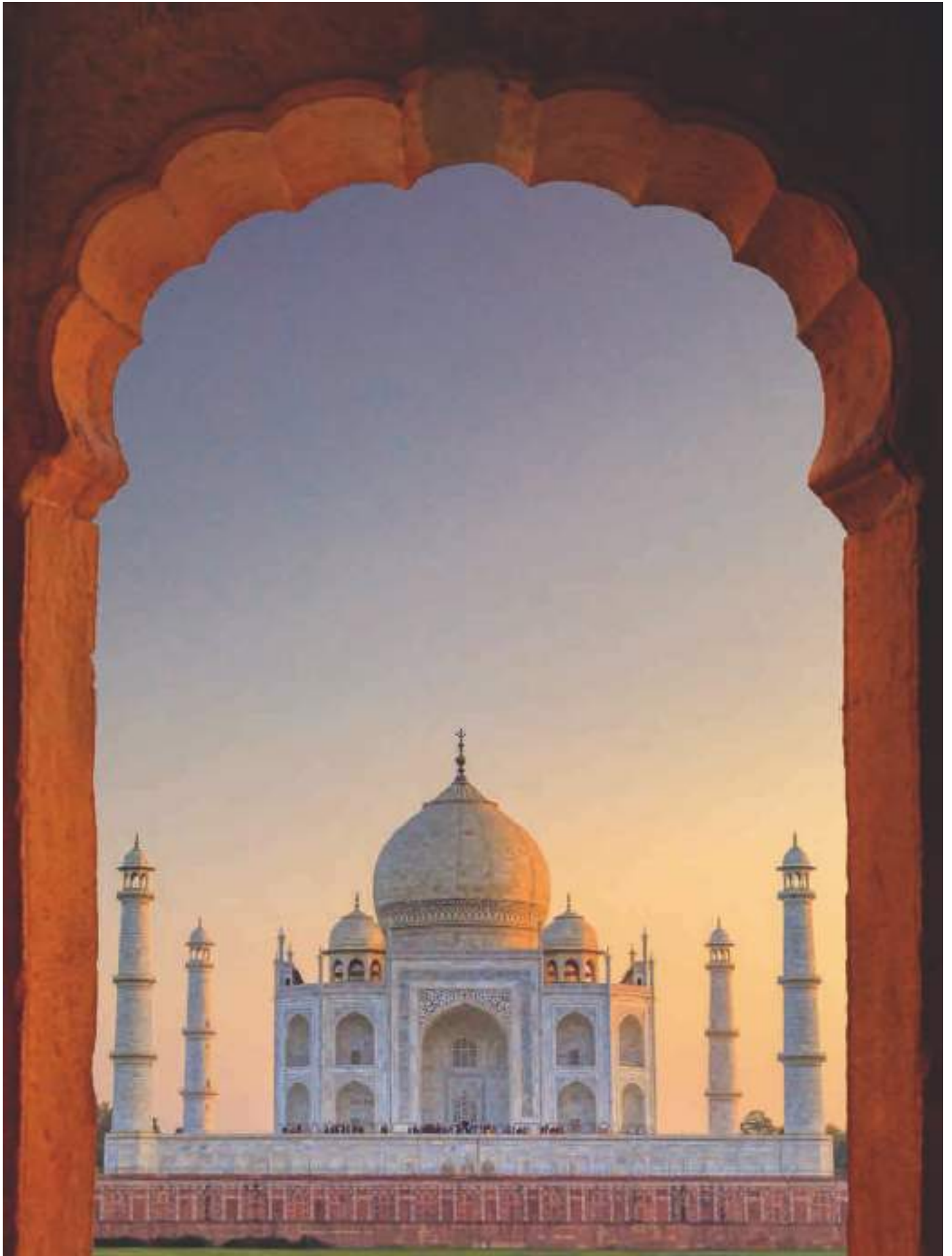


GCL: RX85024 (Ratio 3:2)



GCL: RX85025 (Ratio 3:2)

The Taj Mahal, meaning “Crown of the Palaces” is an ivory-white marble mausoleum on the south bank of the Yamuna river in the Indian city of Agra. It was commissioned in 1632 by the Mughal emperor, Shah Jahan, to house the tomb of his favourite wife, Mumtaz Mahal. The tomb is the centrepiece of a 17-hectare (42-acre) complex, which includes a mosque and a guest house, and is set in formal gardens bounded on three sides by a crenellated wall.



GCL: RT45070 (Ratio 3:4)

ROSENSTIELS PRODUCT GUIDE - KEY

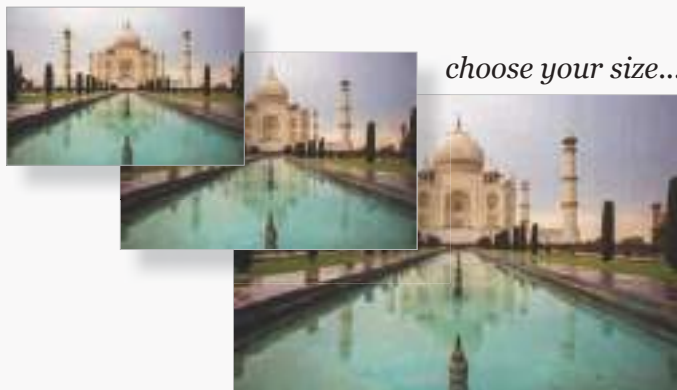
Symbol	Full Title	Description
OE:	Open Edition	Images are available on paper and in a specific size.
GCL:	Giclée	Images are available on either paper or canvas and in a variety of set sizes.
DC:	Deluxe Collection	Images are available on heavy superior art paper using the Gouttelette® process and in a specific size.
SEC:	Superior Edition Collection <i>(Fine Art Editions)</i>	Images are available on heavy superior art paper using the Gouttelette® process and in a specific size with a certificate. Both the print and the certificate are hand- numbered, but these are not Limited Editions.

N.B. These recommendations are a guide only. We are able to customise many images to meet specific sizes, colourways or substrates.

A VISUAL GUIDE TO PRINT ON DEMAND

Nearly all our collection is available as **Print on Demand** for both paper and canvas. You can have your chosen artwork to any size or crop. Check the image page on our website for availability and click on Print on Demand to choose your size.

Example Image



or choose your crop...



For any special projects (crops, colour changes etc) please contact us.

PRINTING

Rosenstiels, combines huge technological developments in the printing world with the traditional expertise and years of training of our own craftsmen. This allows us to print reproductions of the very highest quality and fidelity to the original, using only the best papers and inks.

The Master Printers



HOW TO ORDER GICLÉE PRINTS

5 EASY STEPS

Example Image



1. Choose your image
2. Note the image Giclée reference and ratio
3. Choose the print size you would like from our Giclée Guide (*opposite*)
4. Add the corresponding end code to the Giclée reference *e.g. A2*
Choose your substrate (*Paper or Canvas*)
5. Use the reference to place your order at sales@rosenstiels.com

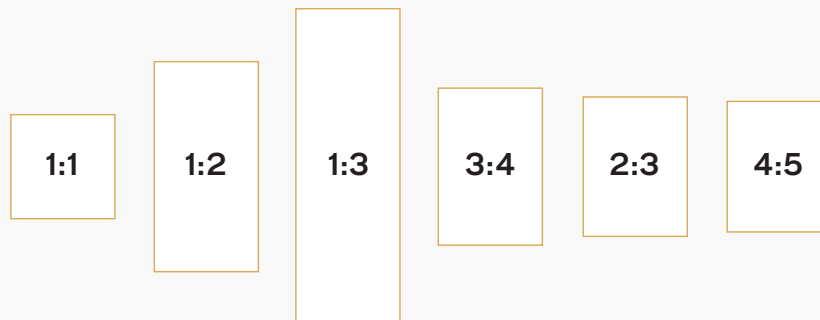
GCL: RL22759 (Ratio 1:1)

The custom Giclée reference to order the example image as a 20 x 20 in canvas print would be:

RL22759 - A2 Canvas

A VISUAL GUIDE TO RATIOS (WXH)

All images can be portrait or landscape (*except for squares*)



A VISUAL GUIDE TO CANVAS WRAPS

We can offer 4 different types of finishing for the canvas border;
Museum being the standard. Borders are 2 in (5 cm).



Museum (standard)
A white border around the image.



Colour Wrap
A chosen colour around the image.



Mirror Effect
Flipped version of the edge of the image.



Gallery Wrap
Enlarge the image to cover the border.

*All examples shown here are available on request.
Please note canvases are shown stretched for illustrative purposes only. We supply canvas unstretched.*

Giclée Guide

Rosenstiels has some 20,000 Giclée prints in stock for immediate shipping. Giclée prints are available in multiple sizes on paper or canvas. This process provides you with a selection of affordable prints at an outstanding quality.

Ratio	Sizes Available <i>(The underlined size is the exact size.)</i>	End Code
1:1	<u>16 x 16 in</u> – 40 x 40 cm <u>20 x 20 in</u> – 50 x 50 cm <u>24 x 24 in</u> – 60 x 60 cm <u>30 x 30 in</u> – 75 x 75 cm <u>36 x 36 in</u> – 90 x 90 cm <u>12 x 12 in</u> – 30 x 30 cm	A1 A2 A3 A4 A5 A6
1:2	<u>12 x 24 in</u> – 30 x 60 cm <u>24 x 48 in</u> – 60 x 120 cm <u>36 x 72 in</u> – 90 x 180 cm <u>20 x 40 in</u> – 50 x 102 cm	B1 B2 B3 B4
1:3	<u>8 x 24 in</u> – 20 x 60 cm <u>12 x 36 in</u> – 30 x 90 cm <u>16 x 48 in</u> – 40 x 120 cm <u>20 x 60 in</u> – 50 x 152 cm	C1 C2 C3 C4
2:3	<u>20 x 30 in</u> – 50 x 75 cm <u>24 x 36 in</u> – 60 x 90 cm <u>48 x 72 in</u> – 120 x 180 cm <u>32 x 48 in</u> – 80 x 120 cm	D1 D2 D3 D4
3:4	<u>18 x 24 in</u> – 45 x 60 cm <u>24 x 32 in</u> – 60 x 80 cm <u>30 x 40 in</u> – 75 x 100 cm <u>36 x 48 in</u> – 90 x 120 cm <u>12 x 16 in</u> – 30 x 40 cm	E1 E2 E3 E4 E5
4:5	<u>16 x 20 in</u> – 40 x 50 cm <u>22 x 28 in</u> – 56 x 71 cm <u>32 x 40 in</u> – 80 x 100 cm	F1 F2 F3

Giclée - Paper

Paper Giclées are offered full bleed (no white border).

Giclée - Canvas

Size selected is face size plus canvas wrap options.

Important Information

A choice of different sizes are offered for each “Ratio” as shown in the table above.

To order, add the corresponding “End Code” to the Giclée Reference, plus the substrate and any extra requirements.

Canvas Wrap Options

Finish	Border	Additional Material <i>(included in the price)</i>
Museum <i>(standard)</i>	2 in (5 cm) white border	½ in (1.2cm) of plain canvas
Colour Wrap	2 in (5 cm) border	½ in (1.2cm) of plain canvas
Mirror Effect	2 in (5 cm) border	½ in (1.2cm) of plain canvas
Gallery Wrap	2 in (5 cm) border	½ in (1.2cm) of plain canvas

ROSENSTIELS

LONDON — 1880

About Us

Rosenstiels is one of the World's leading Publishers of Fine Art Prints and Posters, supplying to a wide variety of trade customers in over 100 countries around the world.

Since its foundation in London (1880) by Felix Rosenstiel, each successive generation of Felix's family has assumed control of the company, with a continuing commitment to quality, service and integrity.

We believe in personal relationships and we support our customers in every possible way, for any size of project. Over the years, our reliability and dedication to quality has won us many prestigious awards and we are rapidly approaching our 140th anniversary in the art industry.

Our Values

Flexibility, reliability and efficiency have always been the three components of our success. We produce quality products at competitive prices and we always deliver in accordance with our commitment to our customers.

We understand that in our industry, some decisions have to be taken quickly and always with total confidentiality. We are able to react very promptly in both design and production at every stage of the process.

Our dynamic Design Team has years of collective experience in every aspect of the industry. We take pride in attention to detail and ensure that everything we create and supply is accurate to our customer's requirements. We understand that each customer is unique and we are responsive to their diverse and specific requirements.

We work with an ever increasing family of artists based throughout the World, who work with us both proactively and in some cases reactively.

Location

Our Head Office is based in the Chelsea area of London, a renowned and historic place for arts and the home to many interior designers and creative companies.

Our Distribution Centre and printing facilities are located some 15 miles from Central London, where the Company commits to running an environmentally friendly policy.

WWW.ROSENSTIELS.COM

Art of distinction





33-35 Markham Street
Chelsea, London
SW3 3NR, England

+44 (0)20 7352 3551
sales@rosenstiels.com
www.rosenstiels.com