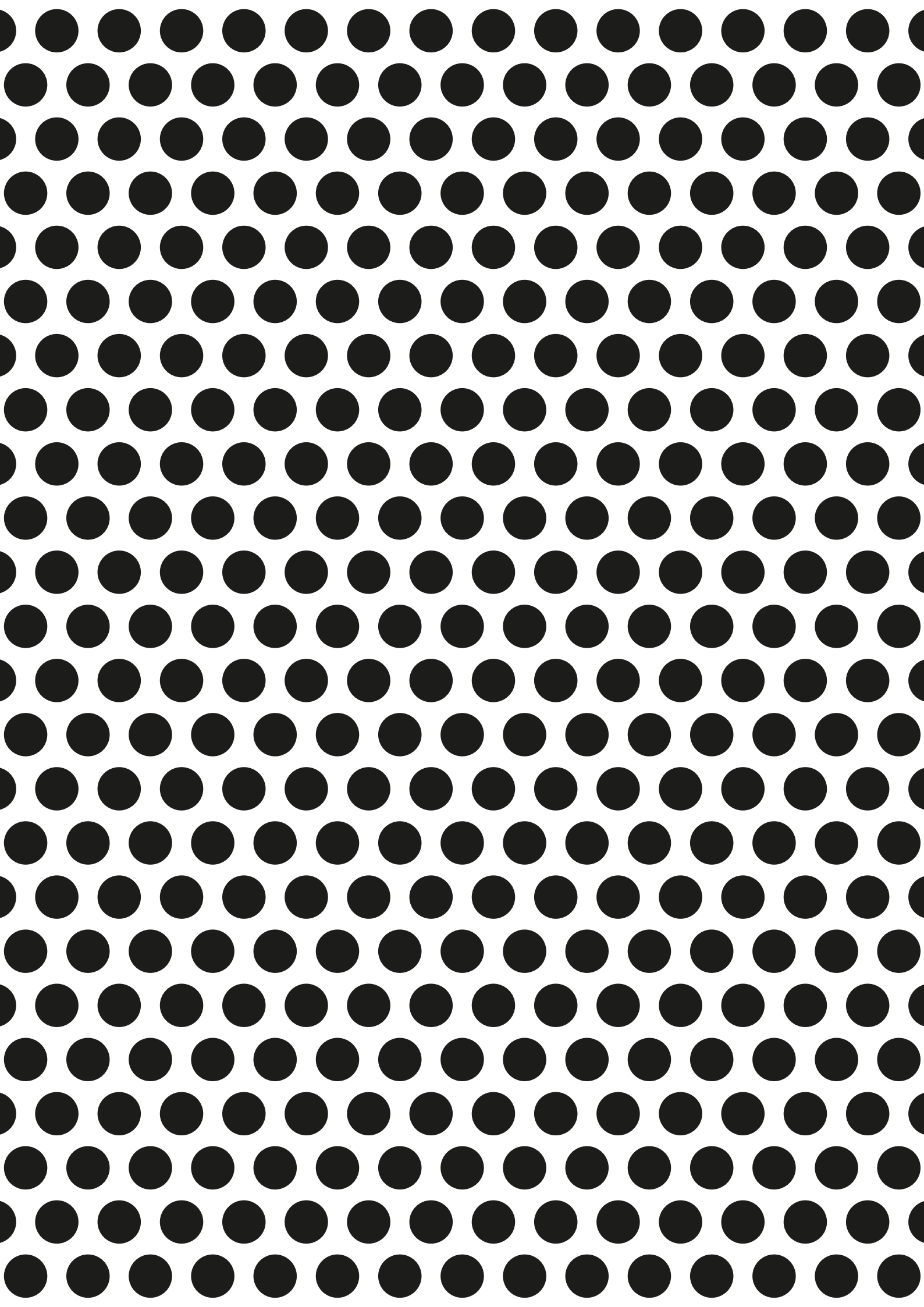


W44N!

ROSENSTIELS

LONDON — 1880



WHAM!

Pop Art has never been so popular!

Since it's origins in the 1950's this ironic and sometimes kitsch art movement has pushed back at so-called elitist traditional art.

It finds inspiration in popular and mass culture such as comic books, advertising and mundane everyday objects. Images are often playfully removed from their original context and the artists' use of mechanical rendering and reproduction is clearly celebrated.

No wonder Pop Art continues to have such wide appeal and our new WHAM! catalogue brings this movement vividly to life.





POP ICONS

Celebrities such as Marilyn Monroe are a favoured subject for Pop Artists - borrowing iconic images from mass culture and giving them new meaning within the refined world of fine art.





GCL: RL24878 (Ratio 1:1)



GCL: RL24877 (Ratio 1:1)



GCL: RX85575 (Ratio 3:2)



GCL: RH2707 (Ratio 4:5)



GCL: RX85576 (Ratio 2:3)



GCL: RX85572 (Ratio 2:3)



GCL: RX82212 (Ratio 2:3)



GCL: RX82215 (Ratio 2:3)



GCL: RX81065 (Ratio 3:2)



GCL: RX82217 (Ratio 2:3)



GCL: RX82213 (Ratio 2:3)



GCL: RL21793 (Ratio 1:1)



GCL: RT41701 (Ratio 3:4)



OE: SPV9318 (Paper Size 27 x 27 in | 68 x 68 cm)

GCL: RL21907 (Ratio 1:1)

POP CULTURE

During the 1950s, Pop Artists such as Roy Lichtenstein took inspiration from forms of popular culture such as comic books and advertising imagery, to create a new visual language challenging preconceptions of high and low art.



GCL: RT41647 (Ratio 3:4)



GCL: RT41646 (Ratio 3:4)



GCL: RT41648 (Ratio 3:4)





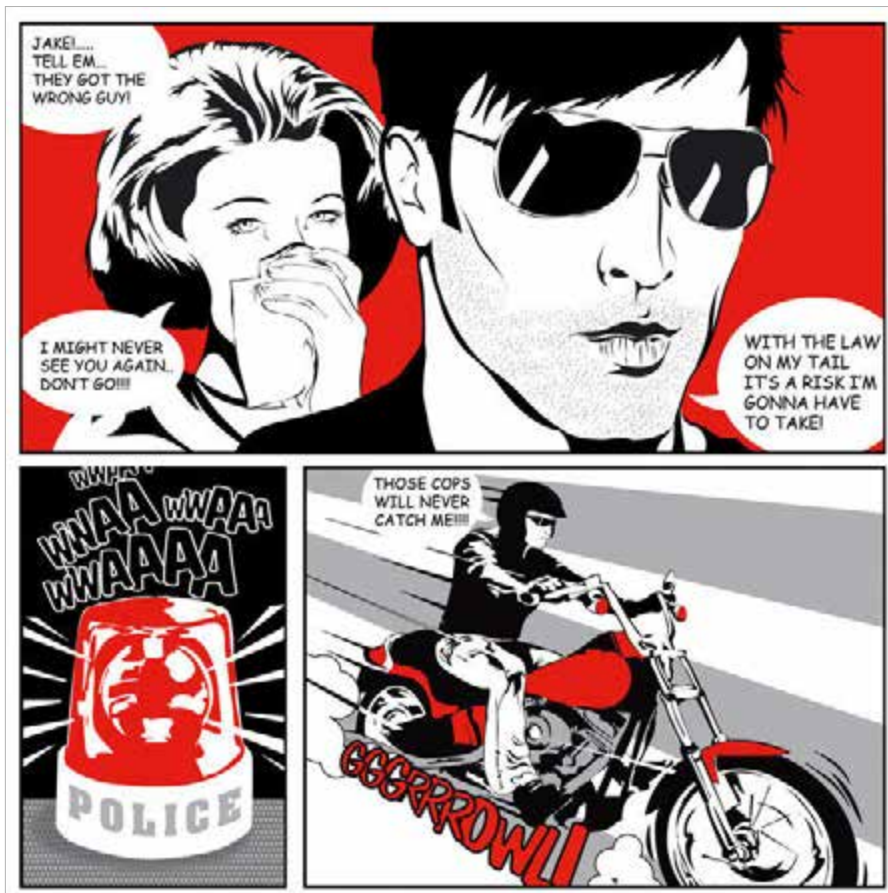


GCL: RT41317 (Ratio 3:4)



OE: SPQ5507 (Paper Size 20 x 20 in | 50 x 50 cm)

GCL: RL24897 (Ratio 1:1)



OE: SPQ5508 (Paper Size 20 x 20 in | 50 x 50 cm)

GCL: RL24898 (Ratio 1:1)



GCL: RL21305 (Ratio 1:1)

DEBORAH AZZOPARDI

The London based artist Deborah Azzopardi emerged from a background in commercial art, where her clients included household names such as Bovril, Bisto and Disney. It was enjoyable but demanding work, and after a serious illness some years ago she decided to concentrate on painting subjects that really meant something to her, reasoning that 'Life's short, and if you do what you love then everything else will eventually fall into place'.

Deborah works in acrylic, usually on board or canvas, and claims that her sense of mischief and black humour inspires much of her subject matter. She has exhibited successfully throughout the United Kingdom.

In March 2014, the artist had her first solo UK exhibition of originals and limited editions on Cork Street, London and launched her debut book 'Sshh...' which showcased her work over the previous 10 years and featured more than 100 images.





GCL: RH0626 (Ratio 5:4)



GCL: RL23918 (Ratio 1:1)



GCL: RL23832 (Ratio 1:1)



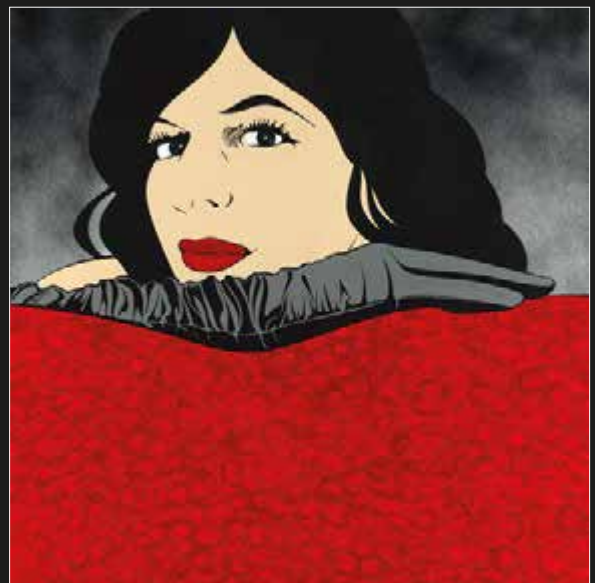
OE: SPV9256 (Paper Size 28 x 28 in | 70 x 70 cm)
GCL: RL24900 (Ratio 1:1)



GCL: RL22025 (Ratio 1:1)



GCL: RL23917 (Ratio 1:1)



OE: SPV9257 (Paper Size 28 x 28 in | 70 x 70 cm)
GCL: RL24899 (Ratio 1:1)



GCL: RH0625 (Ratio 4:5)



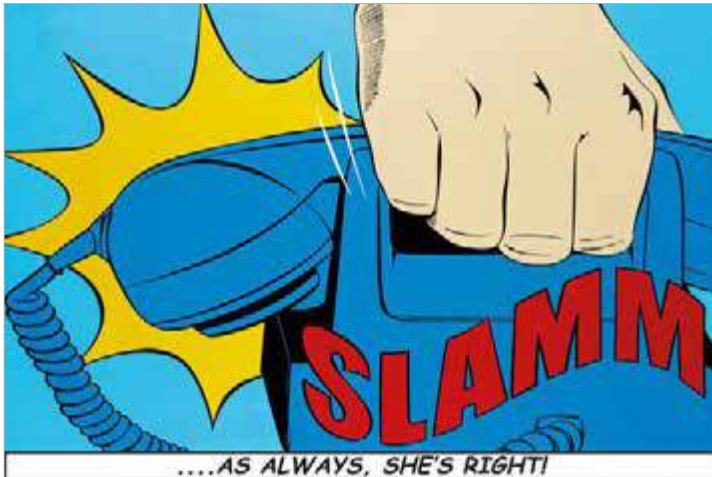
GCL: RT42216 (Ratio 3:4)



OE: SPN4370 (Paper Size 32 x 24 in | 80 x 60 cm)
GCL: RF61070 (Ratio 4:3)



OE: SPN4371 (Paper Size 32 x 24 in | 80 x 60 cm)
GCL: RF61065 (Ratio 4:3)



OE: SPT8491 (Paper Size 27 x 20 in | 70 x 50 cm)
GCL: RK11088 (Ratio 3:2)



OE: SPT8492 (Paper Size 27 x 20 in | 70 x 50 cm)
GCL: RK11076 (Ratio 3:2)



GCL: RX82622 (Ratio 3:2)





ROY LICHTENSTEIN

Roy Lichtenstein was an American Pop Artist, who became a prominent figure within the movement during the 1960s. One of the most recognised practitioners of Pop Art, his work typified the spirit of parody within the genre. Lichtenstein's compositions took the comic strip as their inspiration, produced in a graphic and precise style, with tongue-in-cheek humorous narratives.

Lichtenstein described Pop Art as, "not 'American' painting but actually industrial painting", highlighting the importance of the aesthetics of mechanisation and a mass production within both his own and many other Pop Artists' work.

This painting 'Look Mickey' is regarded as one of Lichtenstein's most influential works, and was bequeathed to the Washington D.C. National Gallery of Art upon his death in September 1997.

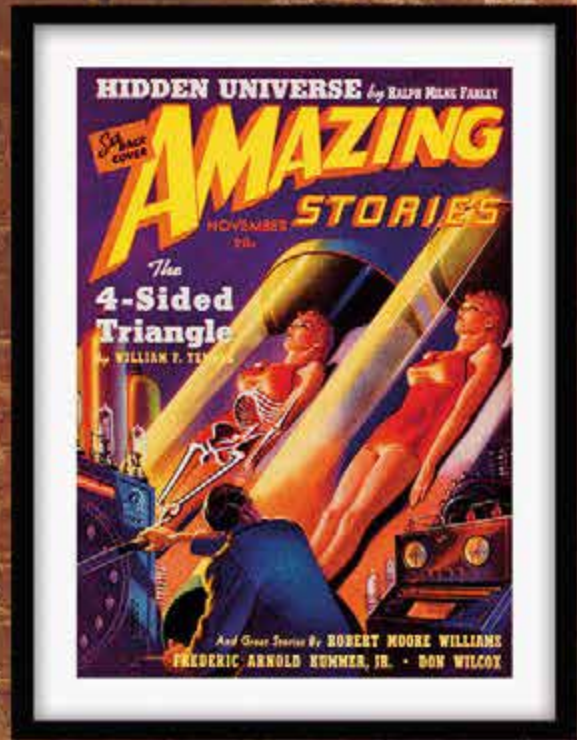




LIGHTENSTEIN

OE: SPT8615 (Paper Size 27 x 20 in | 70 x 50 cm)

GCL: RT41463 (Ratio 4:3)





OE: SPG1512 (Paper Size 12 x 16 in | 30 x 40 cm)
GCL: RT42124 (Ratio 3:4)



OE: SPG1513 (Paper Size 12 x 16 in | 30 x 40 cm)
GCL: RT42125 (Ratio 3:4)



OE: SPG1514 (Paper Size 12 x 16 in | 30 x 40 cm)
GCL: RT42126 (Ratio 3:4)



OE: SPG1515 (Paper Size 12 x 16 in | 30 x 40 cm)
GCL: RT42127 (Ratio 3:4)

IN REPEAT

Inspired by the consumer culture and emerging mass production methods of the 1960's, the repeated image is one of the most identifiable techniques of Pop Art.



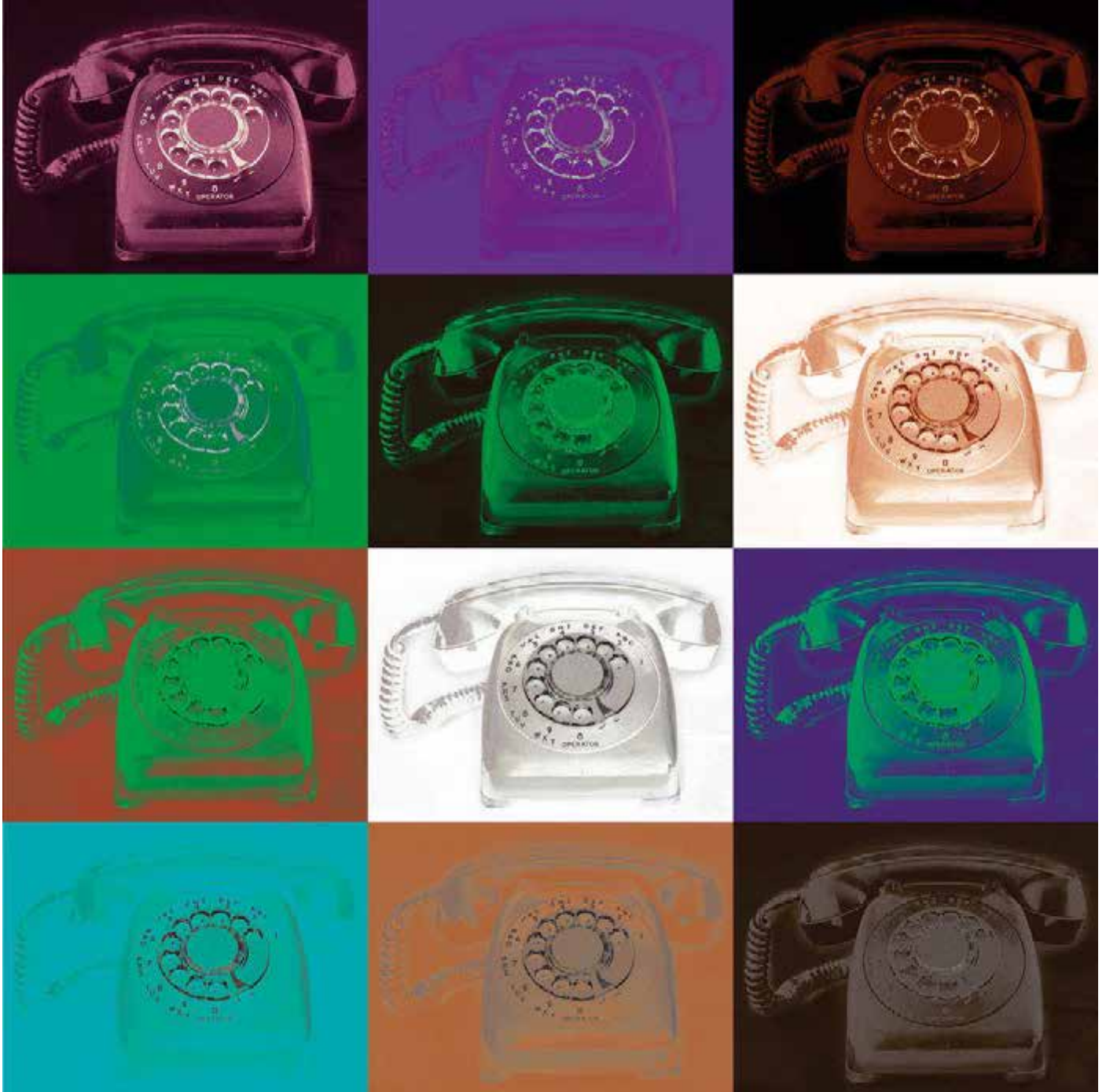
GCL: RX85531 (Ratio 3:2)



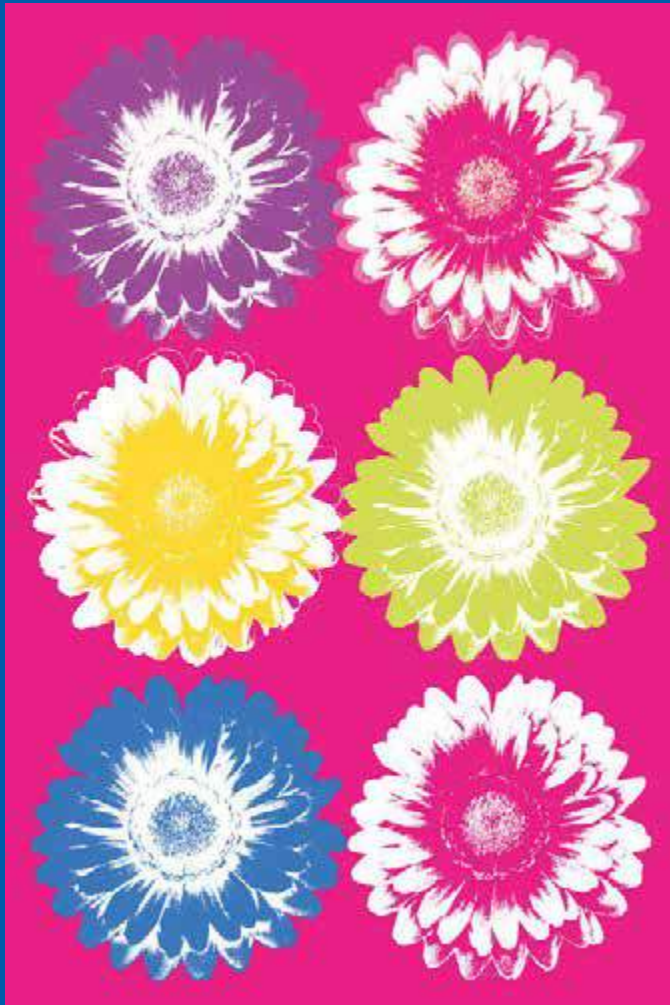
GCL: RX85573 (Ratio 3:2)



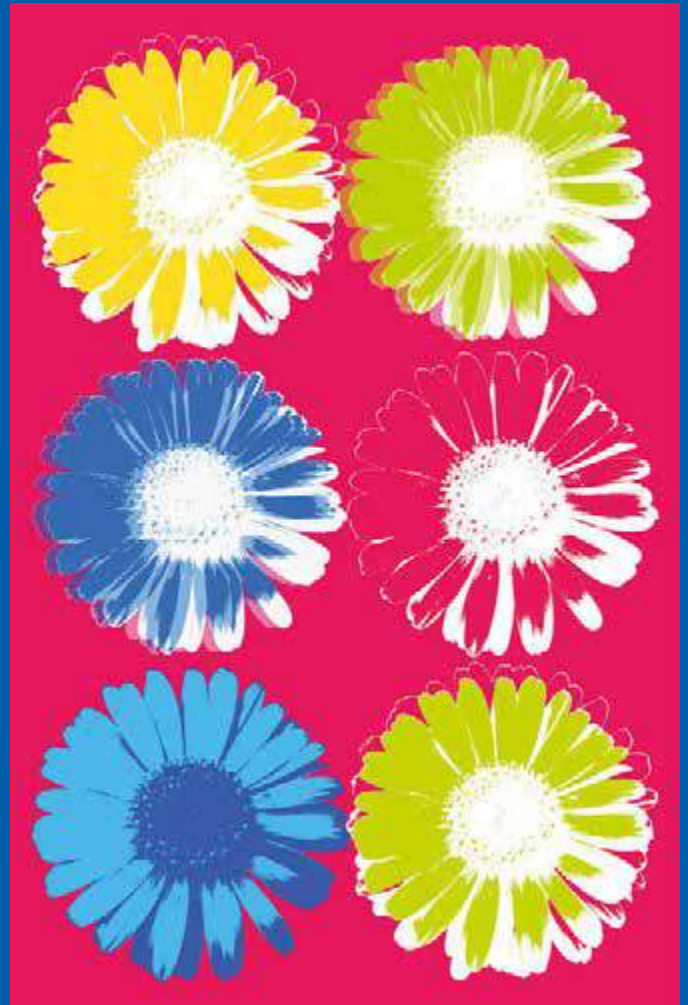
GCL: RL22507 (Ratio 1:1)



GCL: RL24467 (Ratio 1:1)



GCL: RX85568 (Ratio 2:3)



GCL: RX85567 (Ratio 2:3)



GCL: RL24876 (Ratio 1:1)



GCL: RL24875 (Ratio 1:1)



GCL: RL24861 (Ratio 1:1)





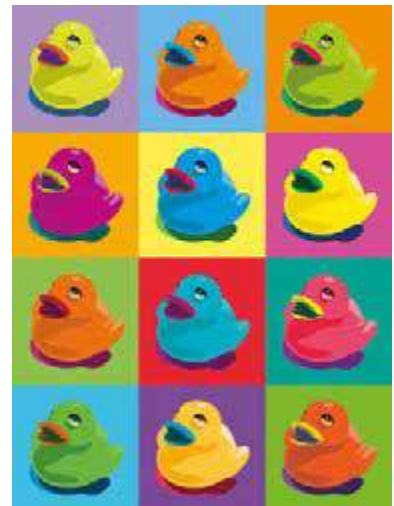
OE: SPK3135 (Paper Size 16 x 16 in | 40 x 40 cm)
OE: SPV9403 (Paper Size 28 x 28 in | 70 x 70 cm)
GCL: RL22802 (Ratio 1:1)



GCL: RL21304 (Ratio 1:1)



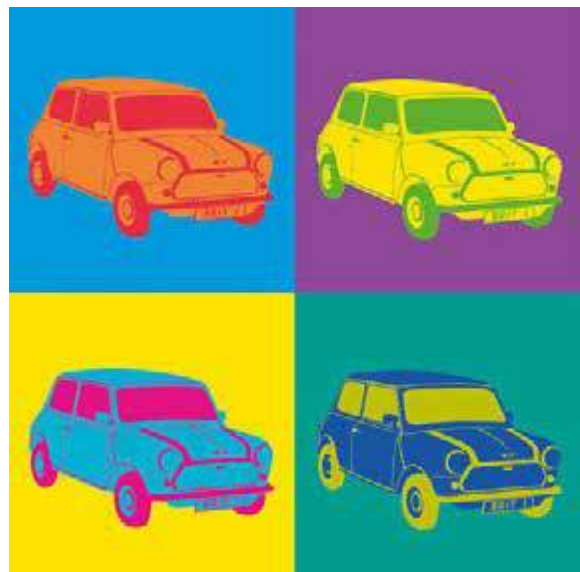
GCL: RX85526 (Ratio 3:2)



GCL: RT42698 (Ratio 3:4)



GCL: RL21908 (Ratio 1:1)



GCL: RL21909 (Ratio 1:1)



GCL: RT45520 (Ratio 3:4)



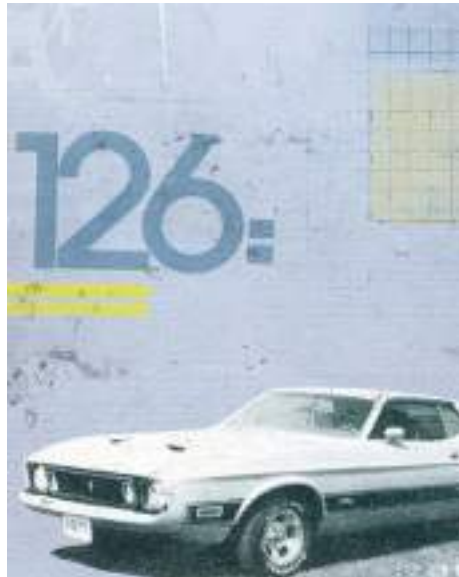
GCL: RT45519 (Ratio 3:4)

THE ART OF COLLAGE

Many Pop Artists use the technique of collage - combining an eclectic mix of pop culture imagery - to create striking and modern artworks. Popular within the Pop Art movement of the 1960s, this medium continues to inspire the artists of today.



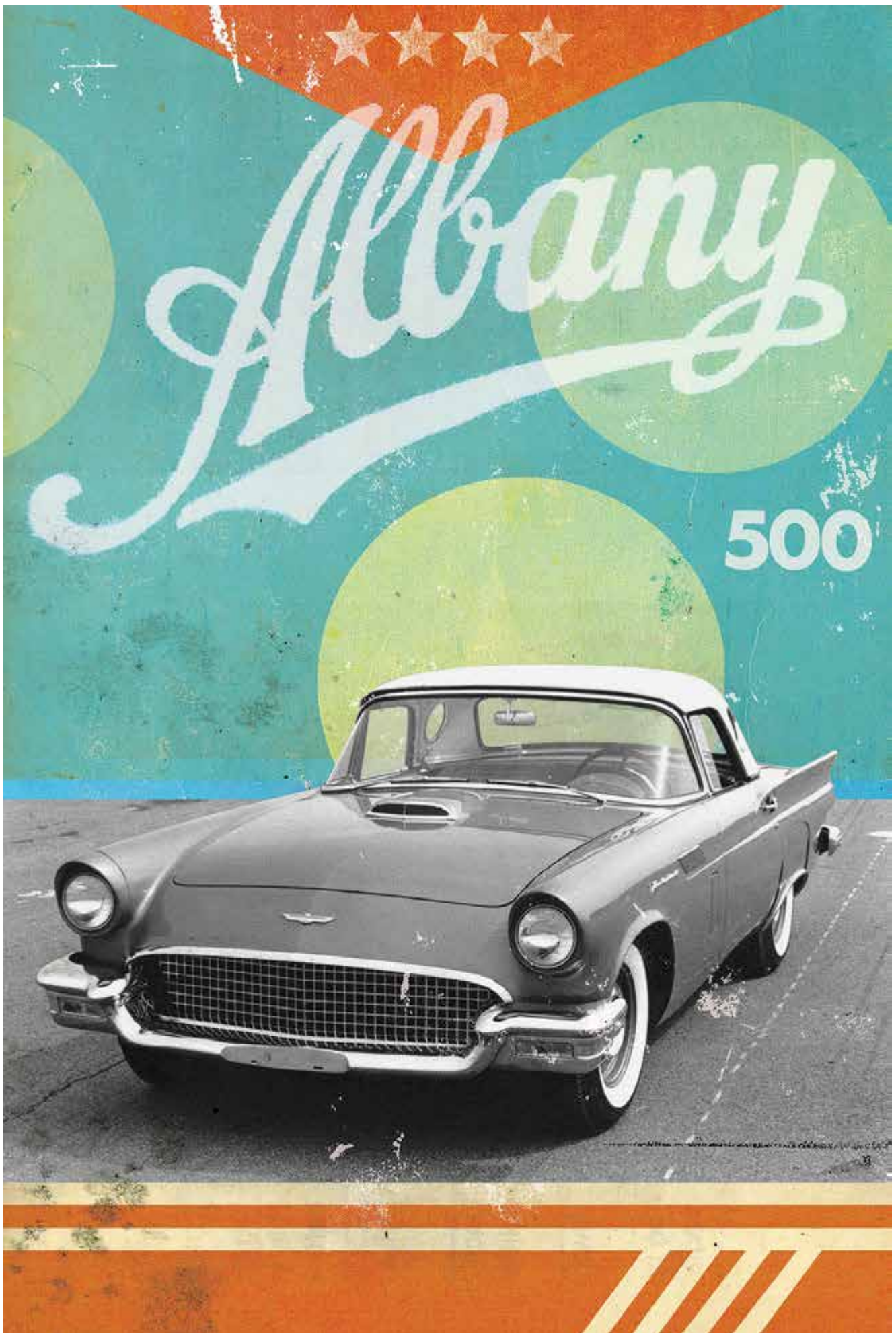
OE: SPT8541 (Paper Size 20 x 27 in | 50 x 70 cm)
GCL: RH2721 (Ratio 4:5)



OE: SPT8542 (Paper Size 20 x 27 in | 50 x 70 cm)
GCL: RH2722 (Ratio 4:5)



OE: SPT8576 (Paper Size 20 x 27 in | 50 x 70 cm)
GCL: RH2723 (Ratio 4:5)



OE: SPC1462 (Paper Size 8 x 12 in | 20 x 30 cm)

GCL: RX83610 (Ratio 2:3)

44



GCL: RX85058 (Ratio 3:2)



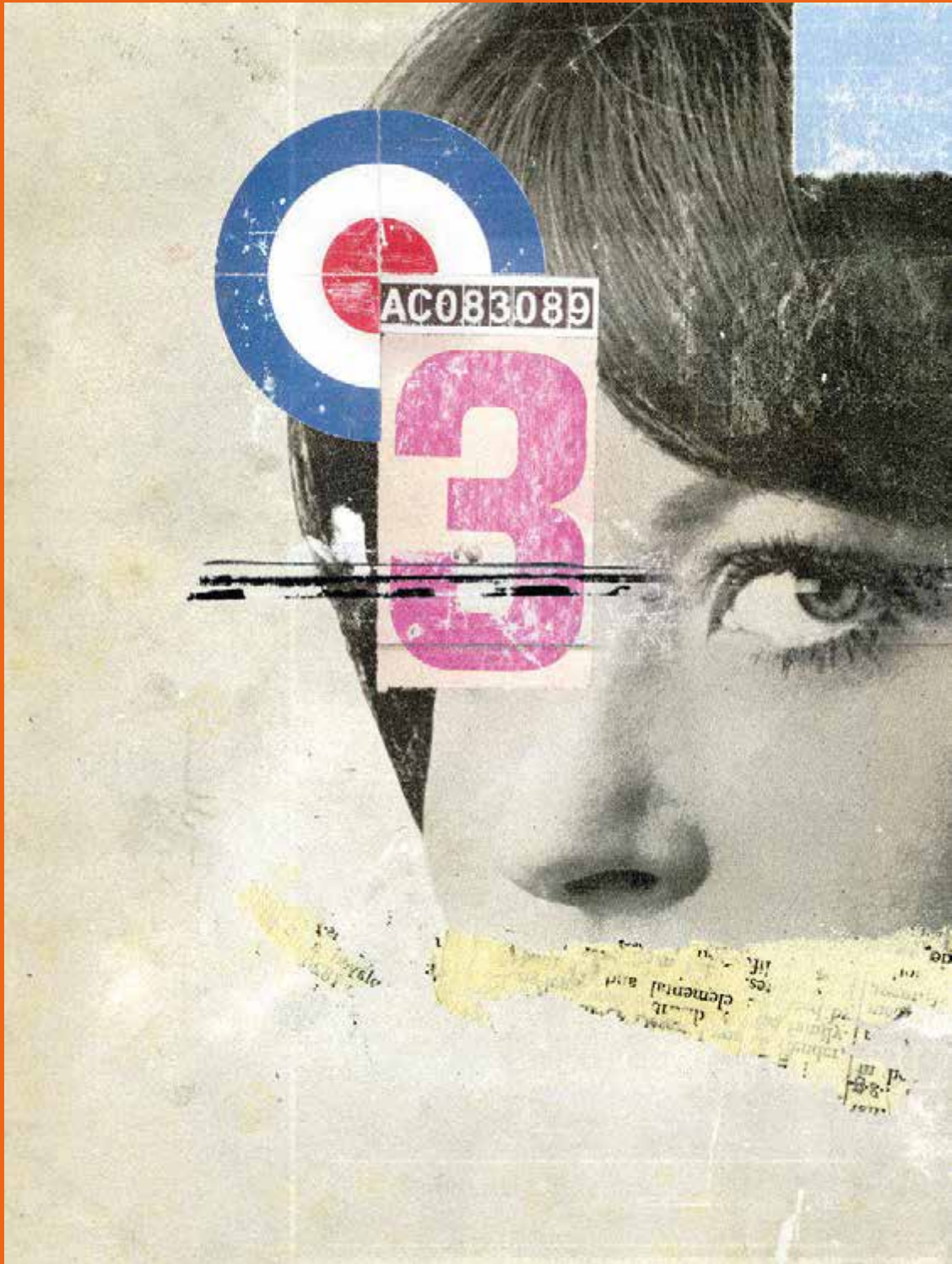
GCL: RX85057 (Ratio 3:2)



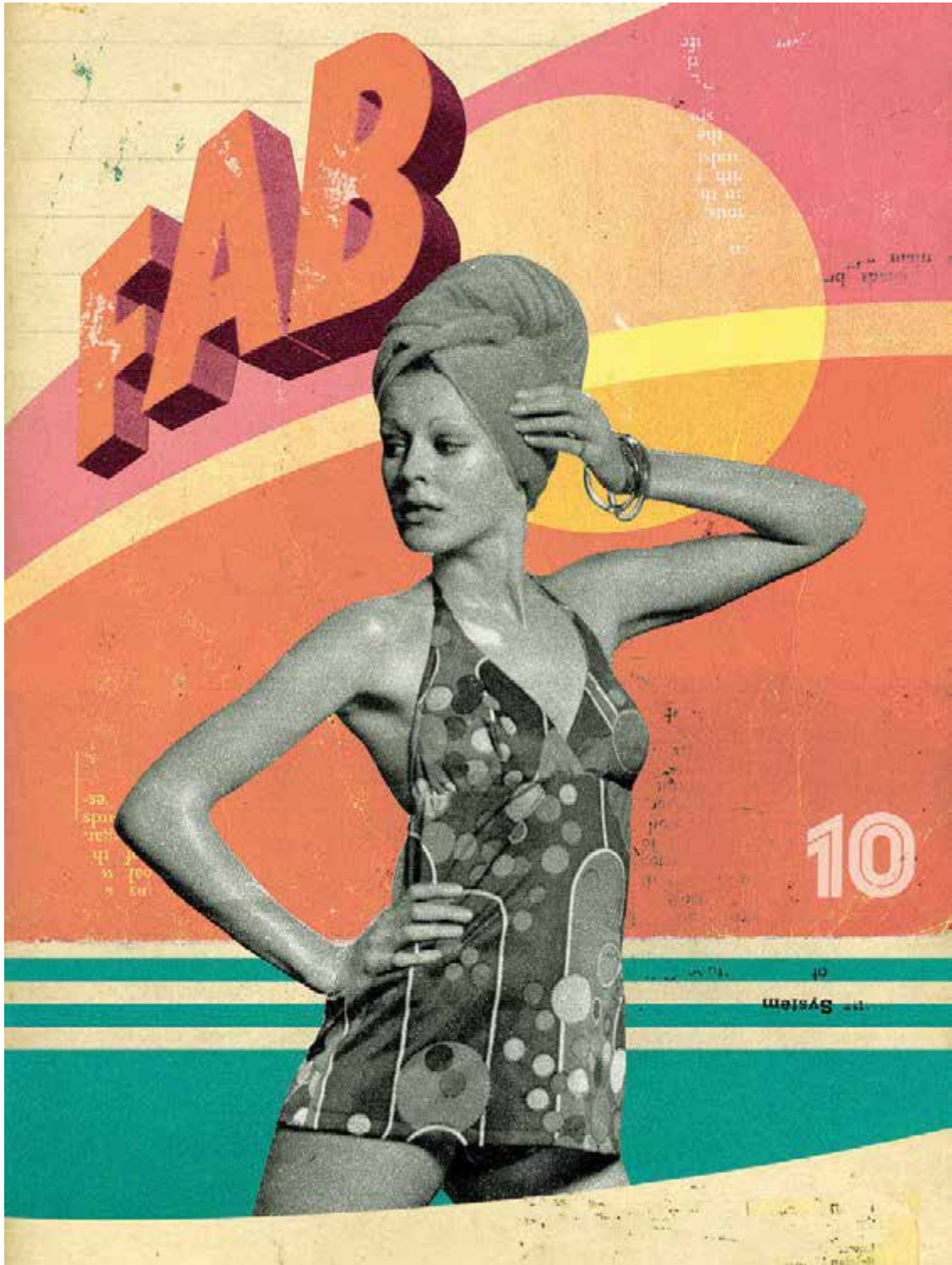
GCL: RX85056 (Ratio 3:2)



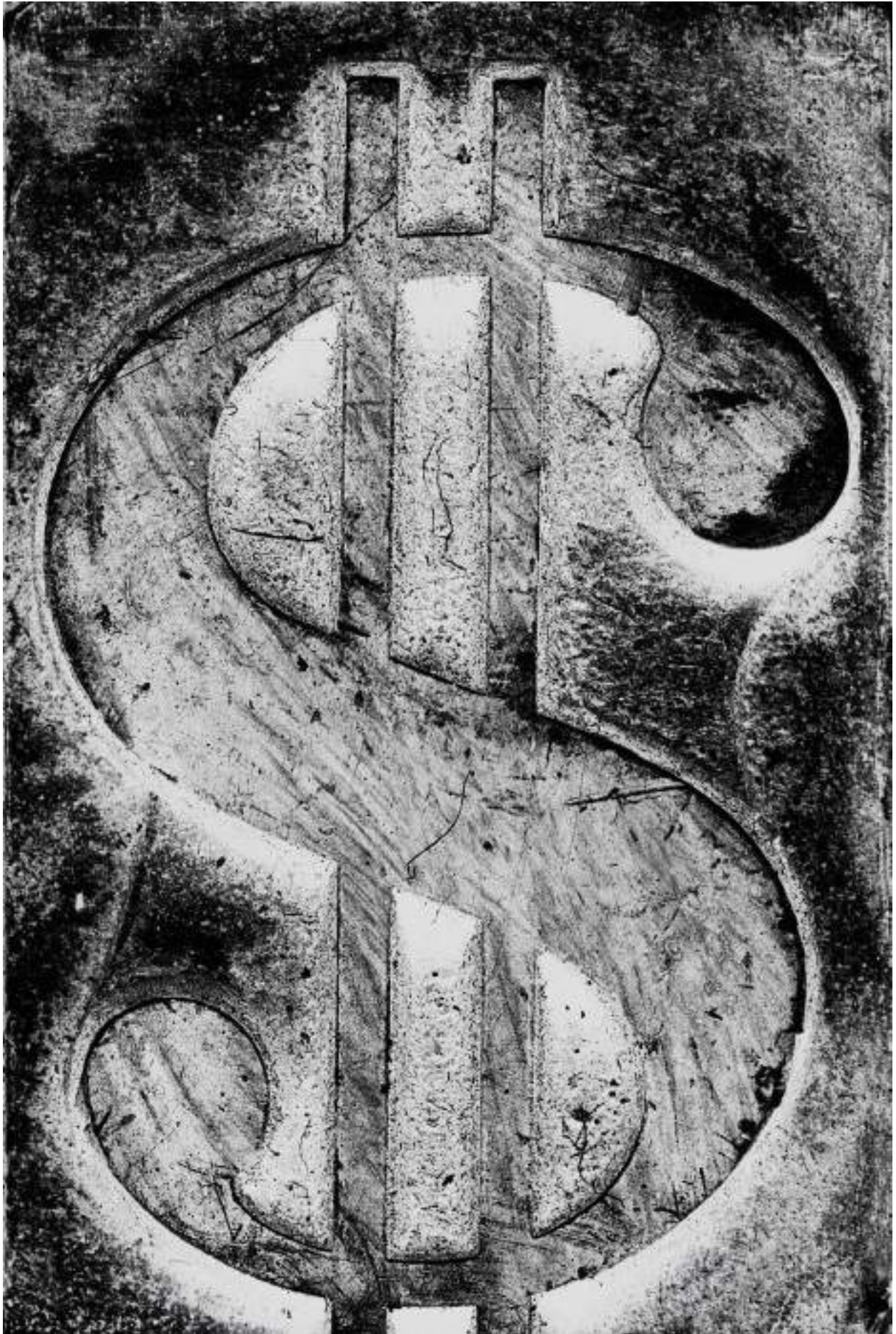
GCL: RH0754 (Ratio 5:4)



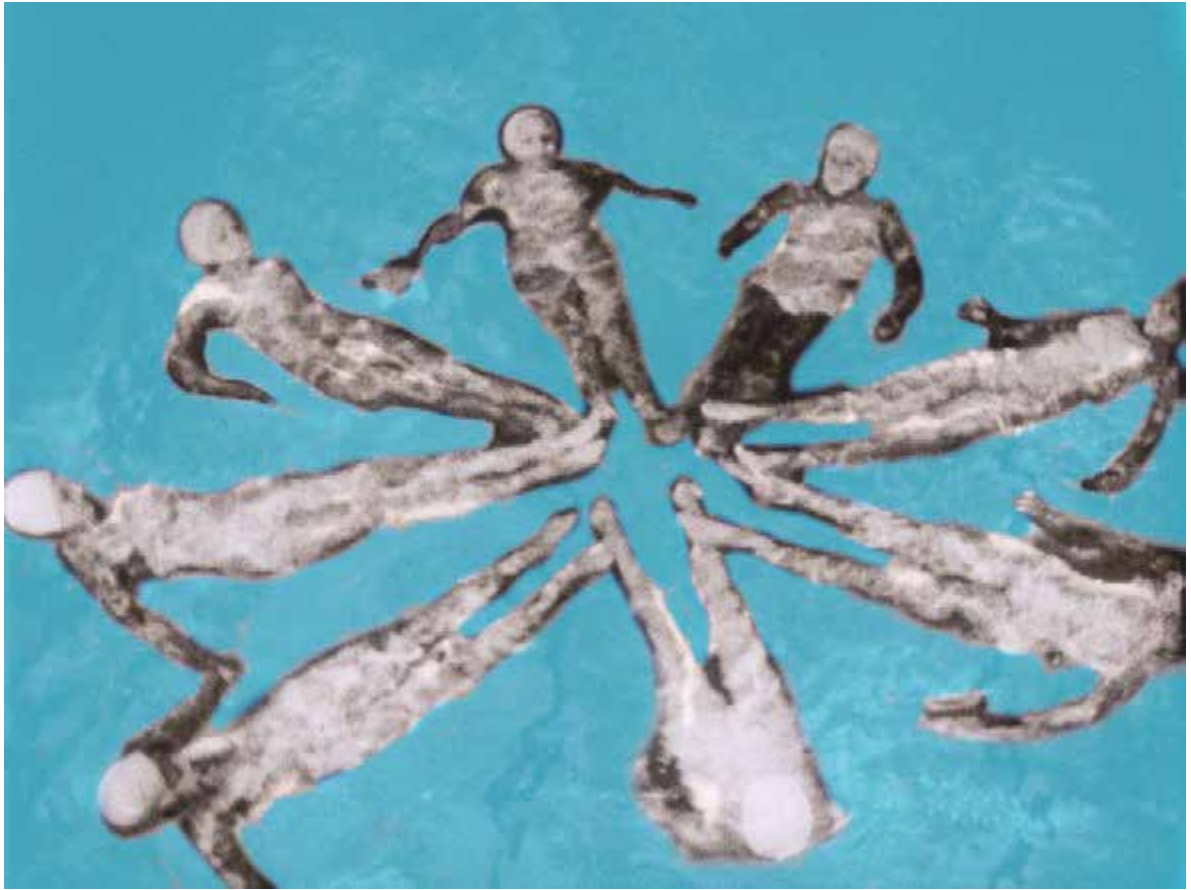
GCL: RT45518 (Ratio 3:4)



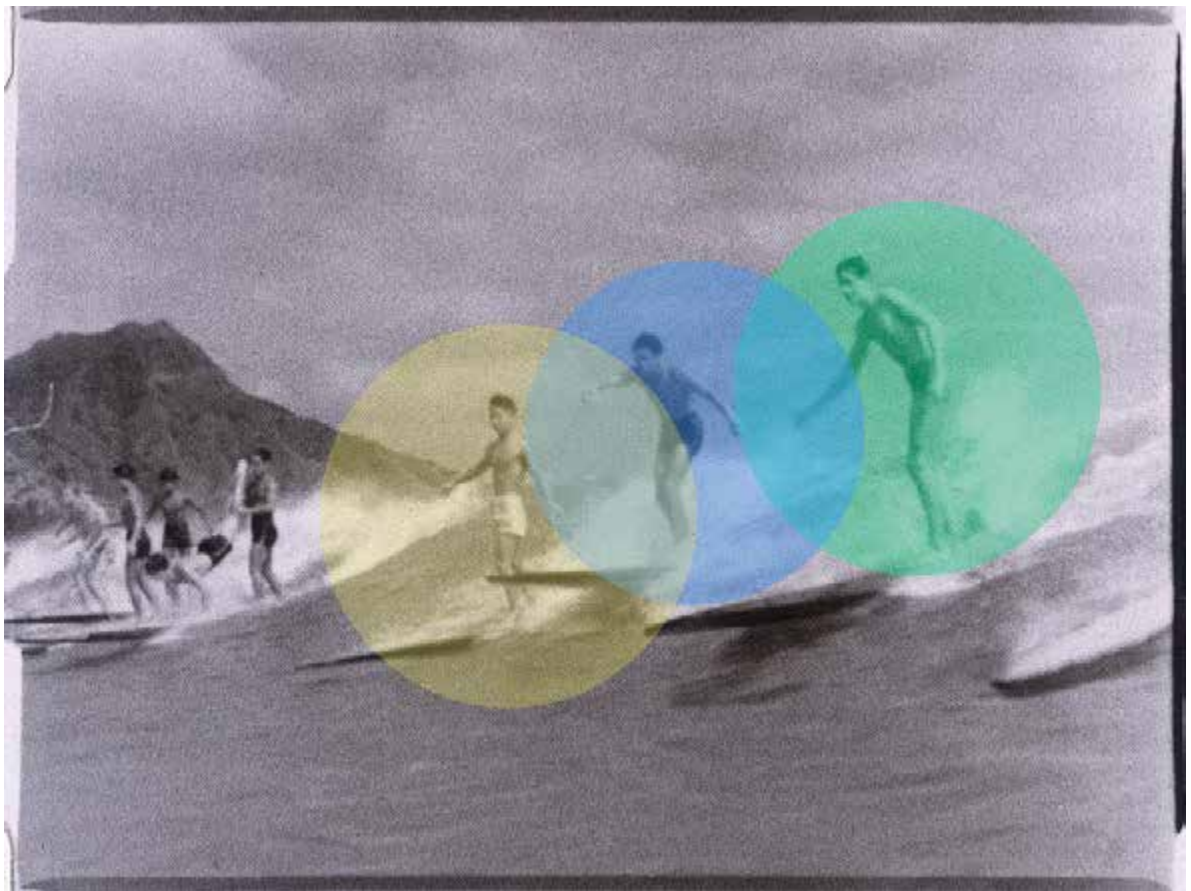
GCL: RT45517 (Ratio 3:4)



GCL: RX81695 (Ratio 2:3)



GCL: RT42608 (Ratio 4:3)



GCL: RT42609 (Ratio 4:3)



GCL: RX85538 (Ratio 3:2)



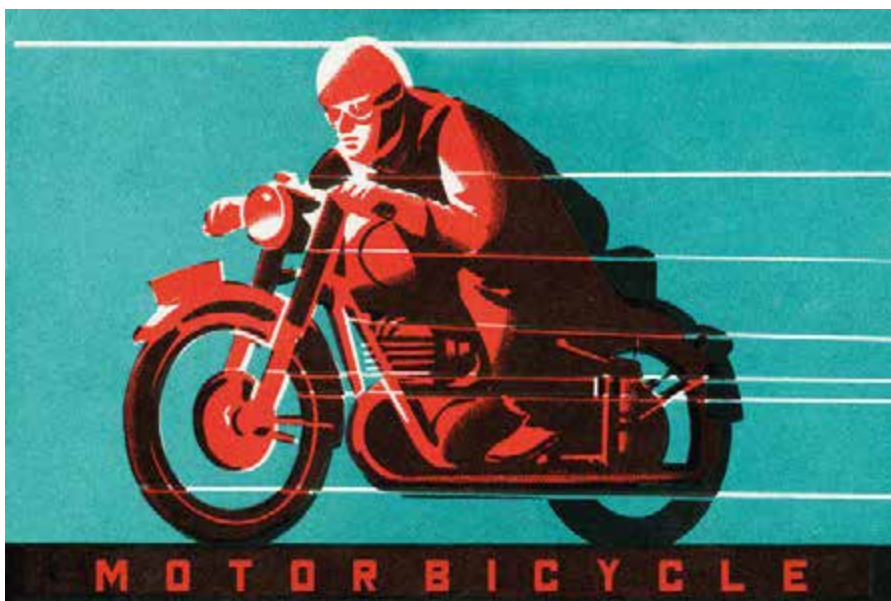
GCL: RX85539 (Ratio 3:2)



GCL: RW71216 (Ratio 2:1)



GCL: RW71217 (Ratio 2:1)



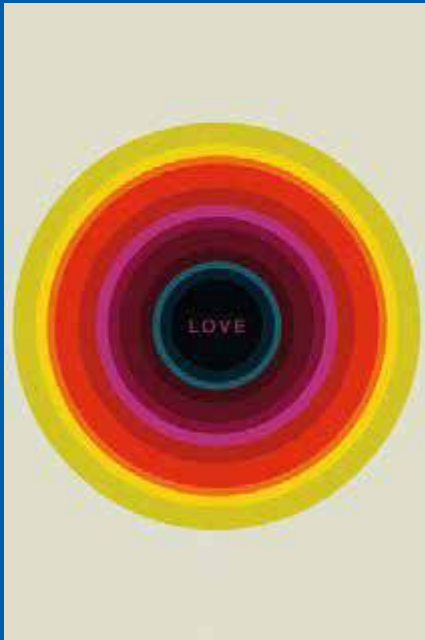
GCL: RX81944 (Ratio 3:2)

POP COLOUR

The Pop Art palette is contemporary, vivid and attention grabbing. Primary red, blue and yellow are important to the look, as are bright, popping neon shades.



GCL: RX85536 (Ratio 3:2)



GCL: RX85532 (Ratio 2:3)



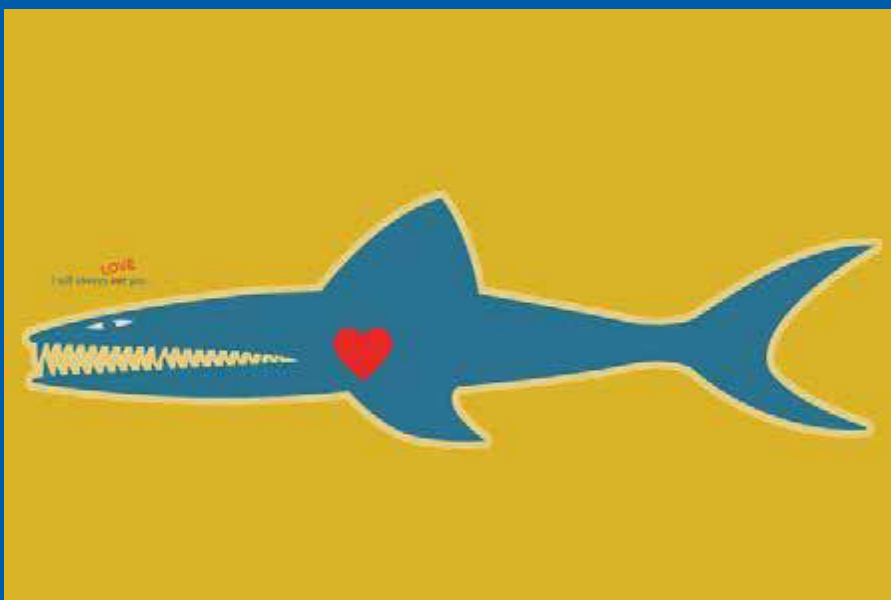
GCL: RX85533 (Ratio 2:3)



GCL: RX85535 (Ratio 2:3)



GCL: RX85534 (Ratio 2:3)



GCL: RX85537 (Ratio 3:2)



GCL: RX85545 (Ratio 2:3)



GCL: RX85544 (Ratio 2:3)



GCL: RX85542 (Ratio 2:3)



GCL: RX85541 (Ratio 2:3)



GCL: RX85543 (Ratio 2:3)



GCL: RX85546 (Ratio 2:3)







GCL: RT41187 (Ratio 3:4)

59



GCL: RX85111 (Ratio 2:3)



GCL: RX85570 (Ratio 2:3)



GCL: RX85112 (Ratio 2:3)



GCL: RX85571 (Ratio 2:3)

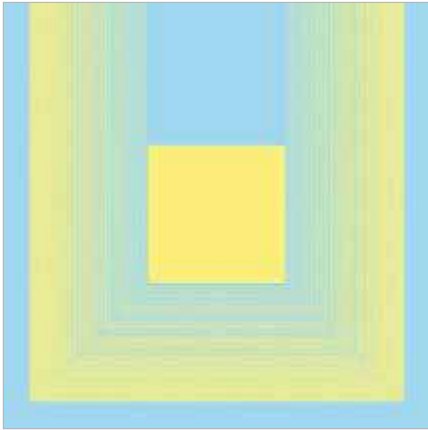


GCL: RX85587 (Ratio 2:3)

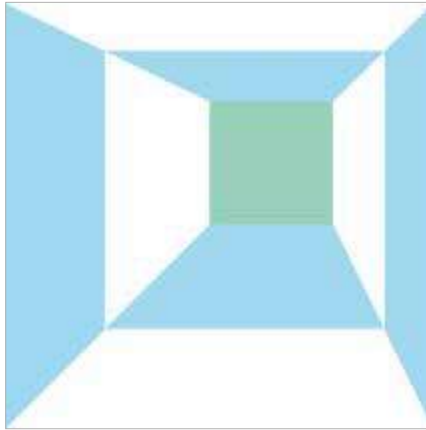


GCL: RX85588 (Ratio 2:3)

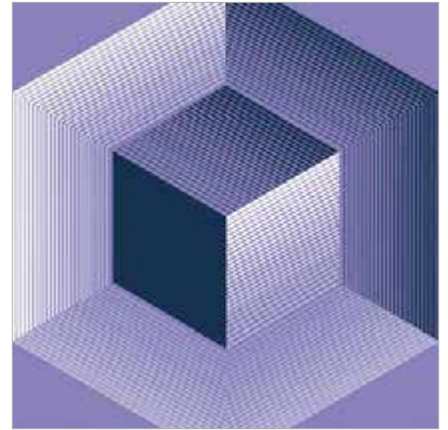




GCL: RL24806 (Ratio 1:1)



GCL: RL24807 (Ratio 1:1)



GCL: RL24808 (Ratio 1:1)



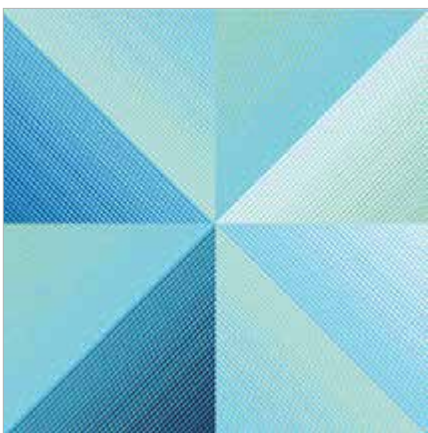
GCL: RL24809 (Ratio 1:1))



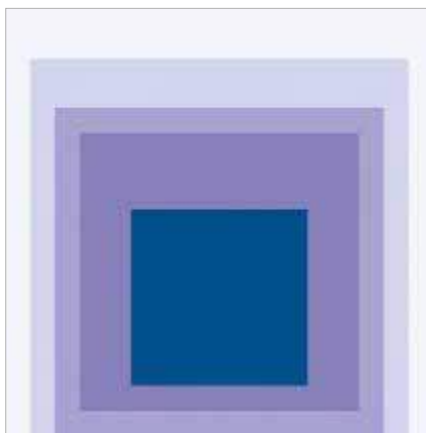
GCL: RL24810 (Ratio 1:1)



GCL: RL24811 (Ratio 1:1)



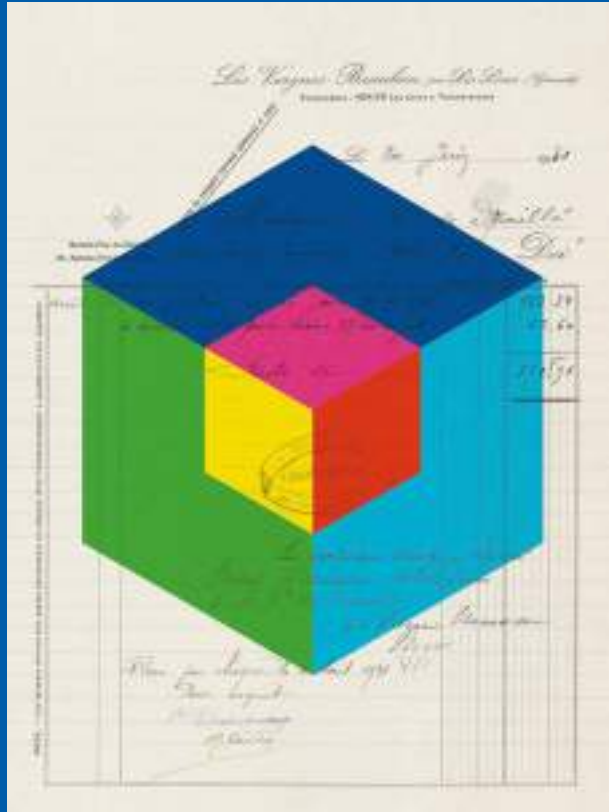
GCL: RL24812 (Ratio 1:1)



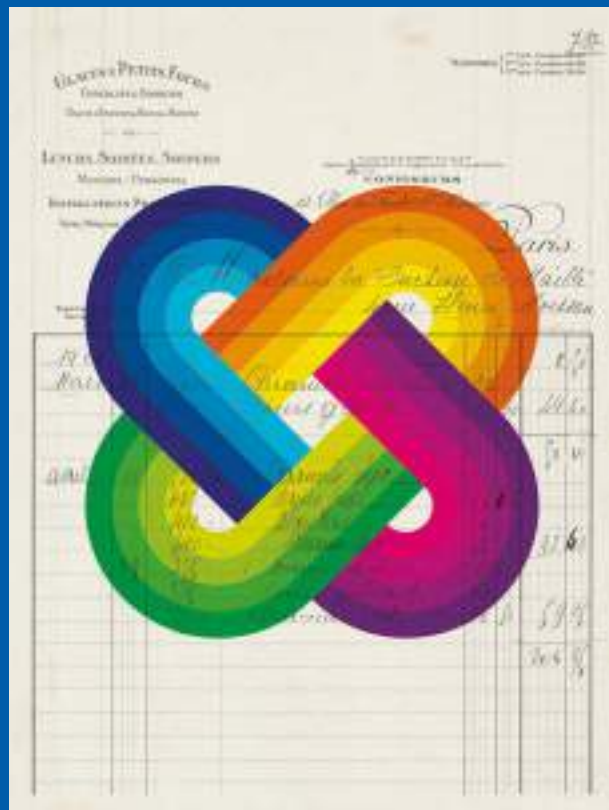
GCL: RL24813 (Ratio 1:1)



GCL: RL24814 (Ratio 1:1)



GCL: RT44419 (Ratio 3:4)



GCL: RT44418 (Ratio 3:4)



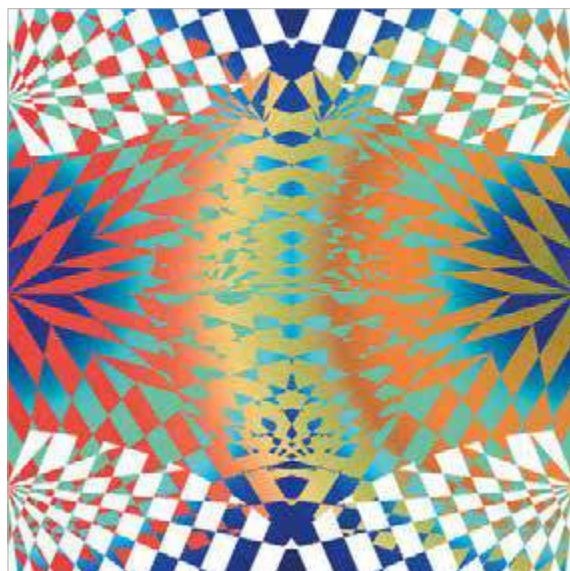
GCL: RL24883 (Ratio 1:1)



GCL: RL24884 (Ratio 1:1)



GCL: RL21834 (Ratio 1:1)



GCL: RL21833 (Ratio 1:1)



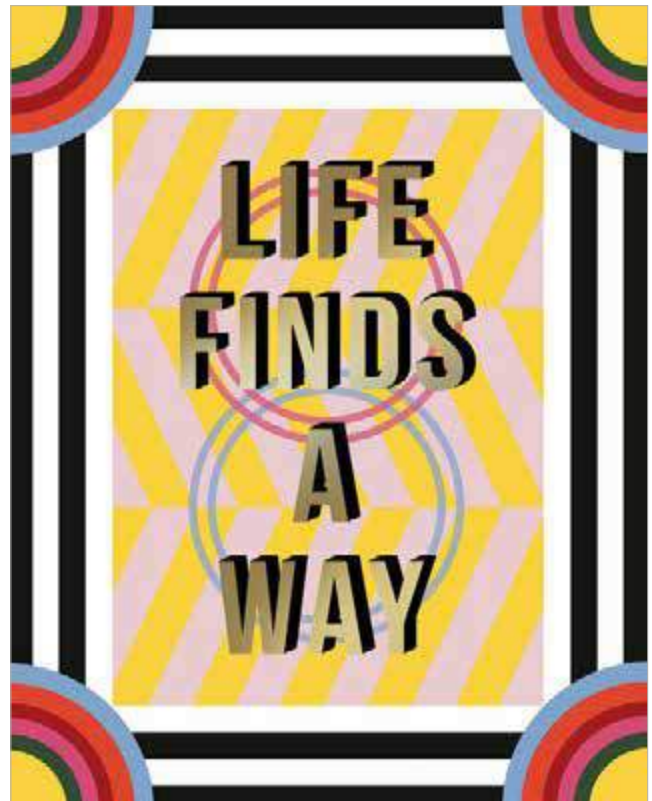
GCL: RL24263 (Ratio 1:1)



GCL: RL24262 (Ratio 1:1)



GCL: RH2174 (Ratio 4:5)



GCL: RH2173 (Ratio 4:5)



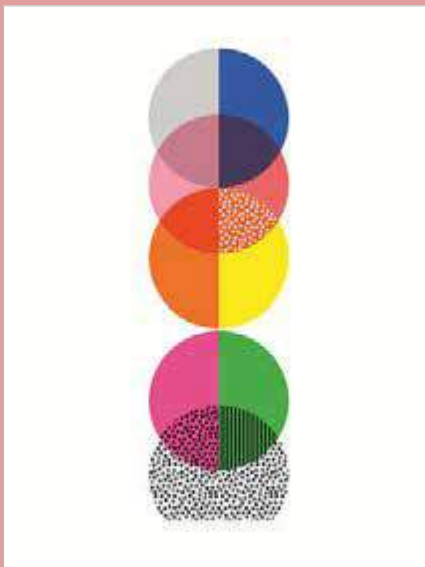
GCL: RT45546 (Ratio 4:3)



GCL: RT43592 (Ratio 3:4)



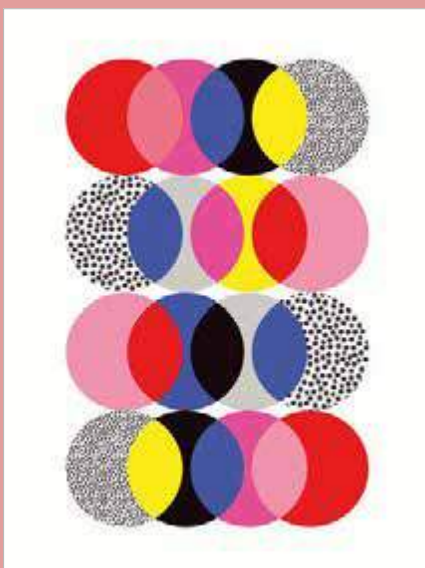
GCL: RT43595 (Ratio 3:4)



GCL: RT43593 (Ratio 3:4)



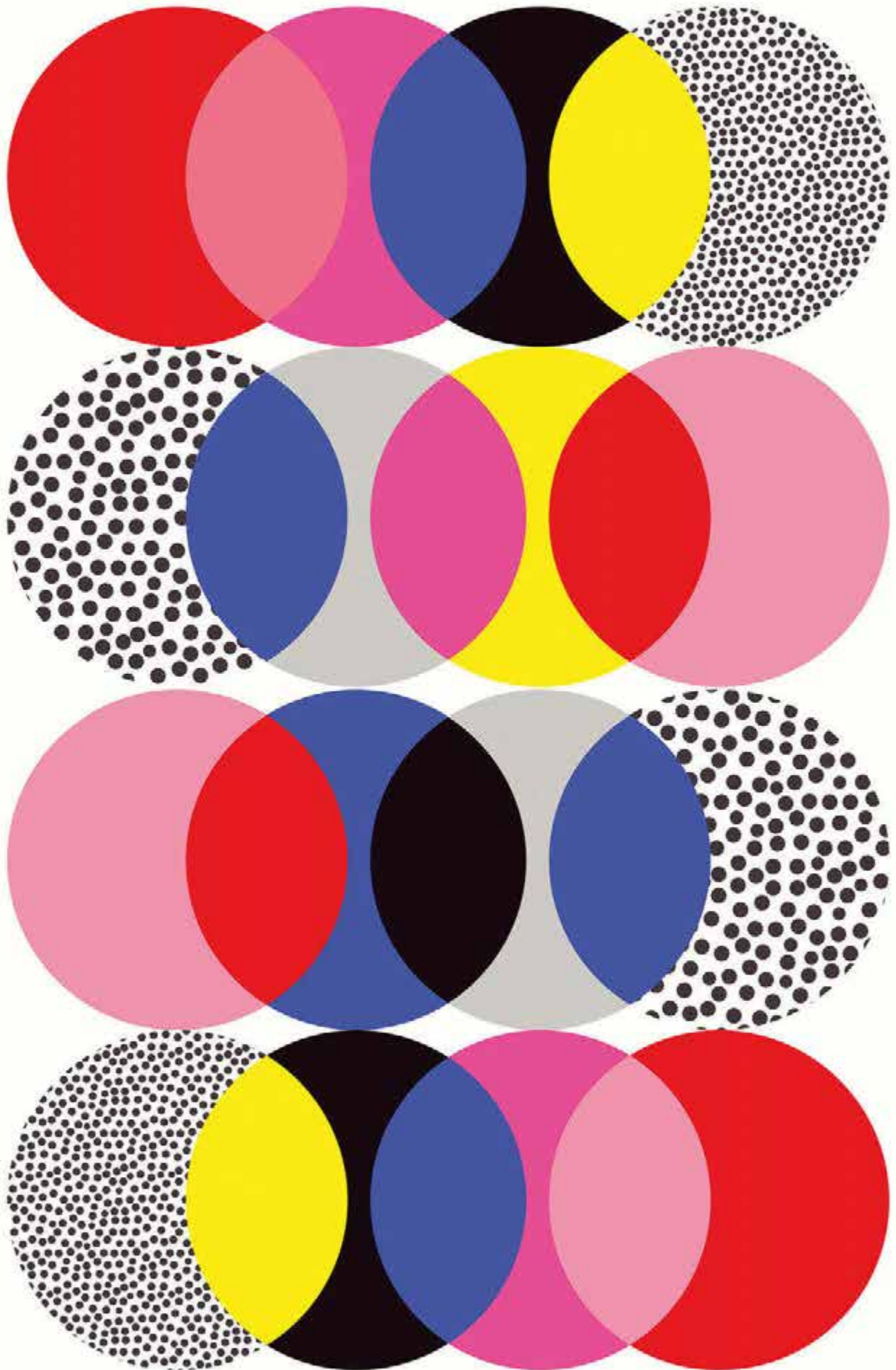
GCL: RT43596 (Ratio 3:4)

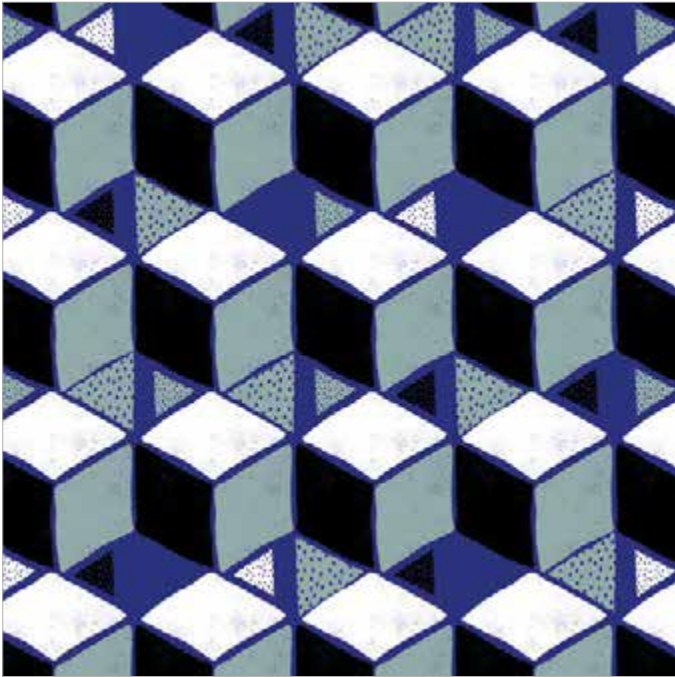


GCL: RT43594 (Ratio 3:4)

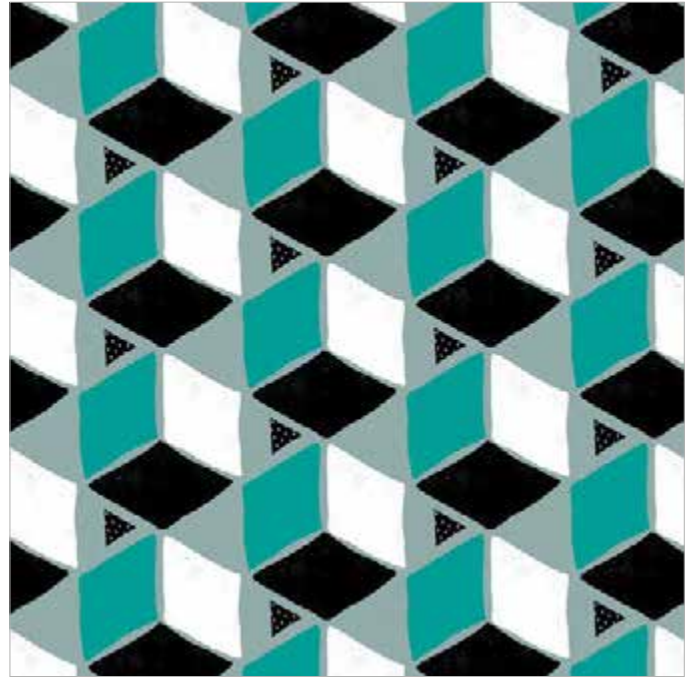


GCL: RT43597 (Ratio 3:4)

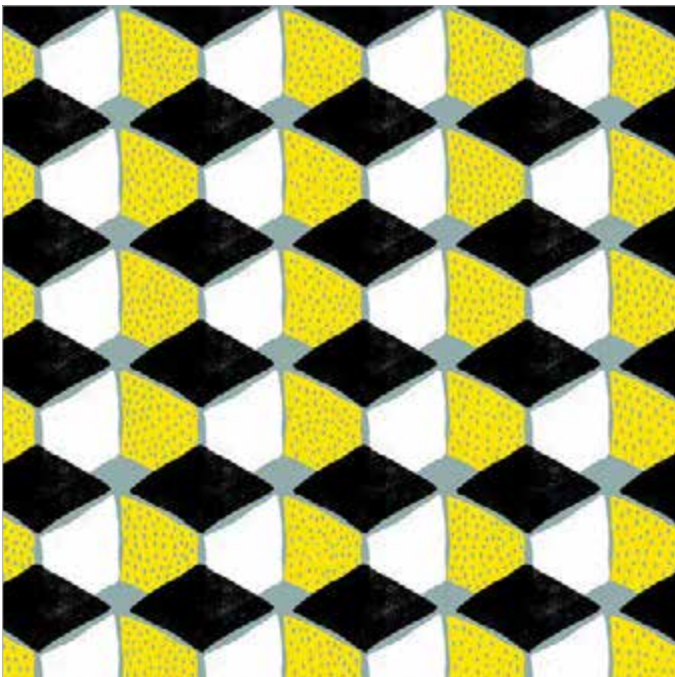




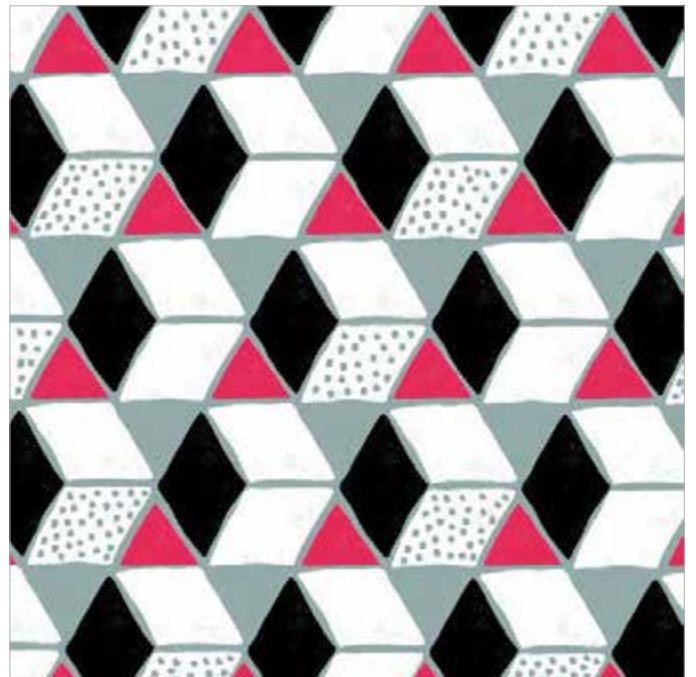
GCL: RL23418 (Ratio 1:1)



GCL: RL23419 (Ratio 1:1)



GCL: RL23420 (Ratio 1:1)



GCL: RL23421 (Ratio 1:1)



GCL: RH1375 (Ratio 4:5)



GCL: RH1374 (Ratio 4:5)

BIG CITY

BRIGHT LIGHTS

Advertising billboards, celebrities and the bright lights of the big city have provided a wealth of inspiration to Pop Artists. Urban pop culture is transformed and transported onto the gallery wall.



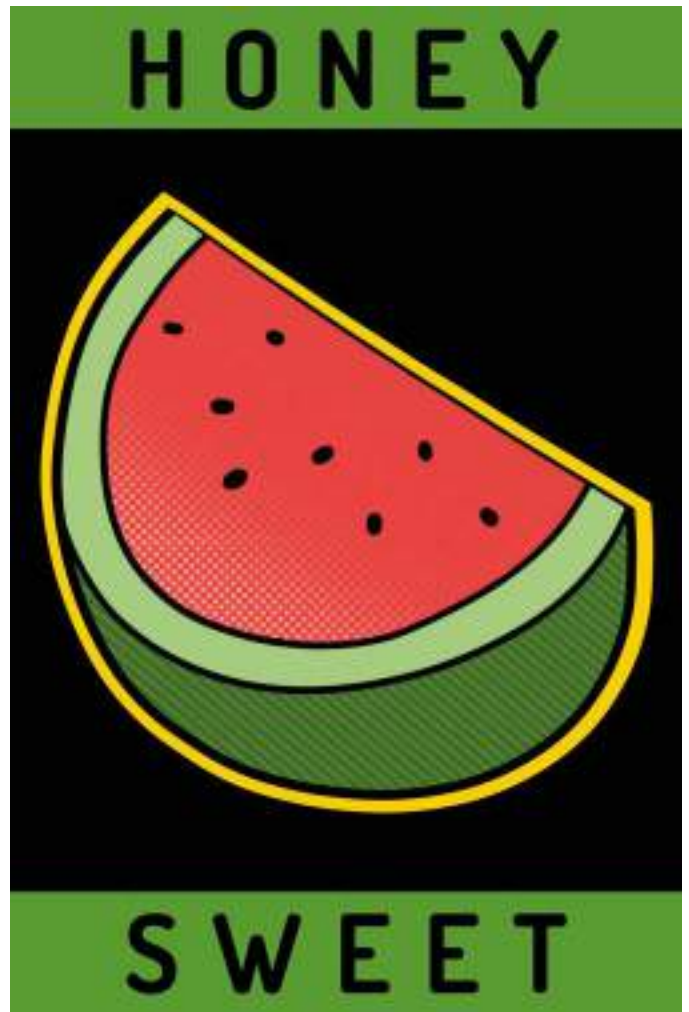
GCL: RX85530 (Ratio 2:3)



GCL: RX85528 (Ratio 2:3)



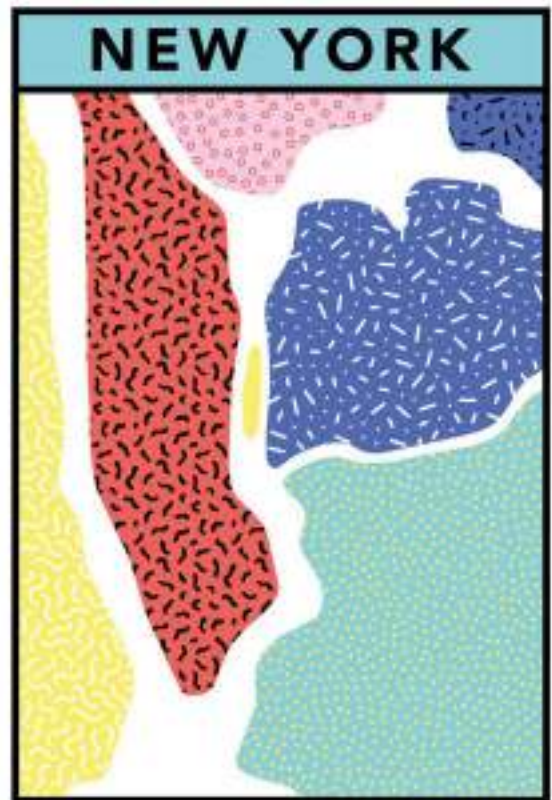
GCL: RX85527 (Ratio 2:3)



GCL: RX85529 (Ratio 2:3)



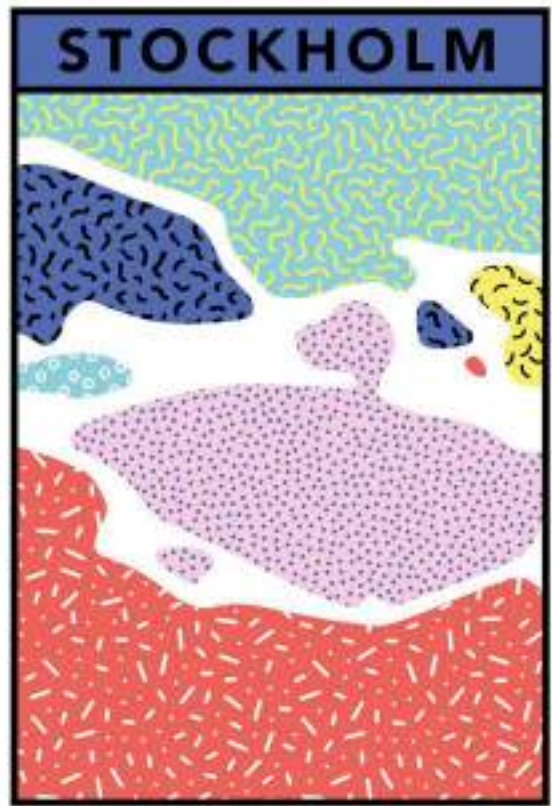
GCL: RT44185 (Ratio 3:4)



GCL: RT44186 (Ratio 3:4)



GCL: RT44187 (Ratio 3:4)



GCL: RT44188 (Ratio 3:4)



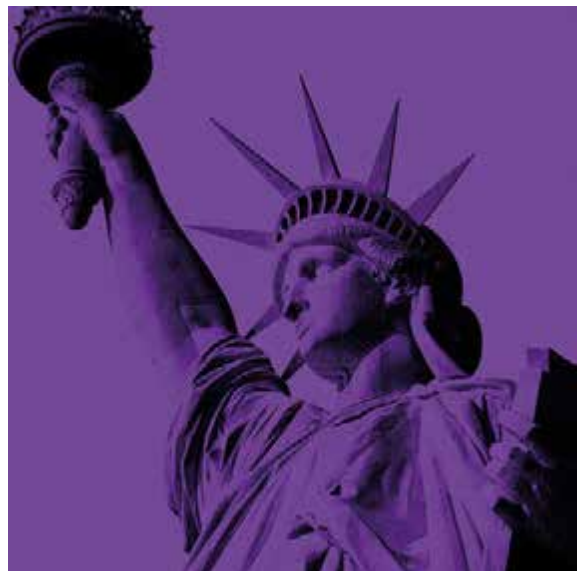
GCL: RL24855 (Ratio 1:1)



GCL: RL24856 (Ratio 1:1)



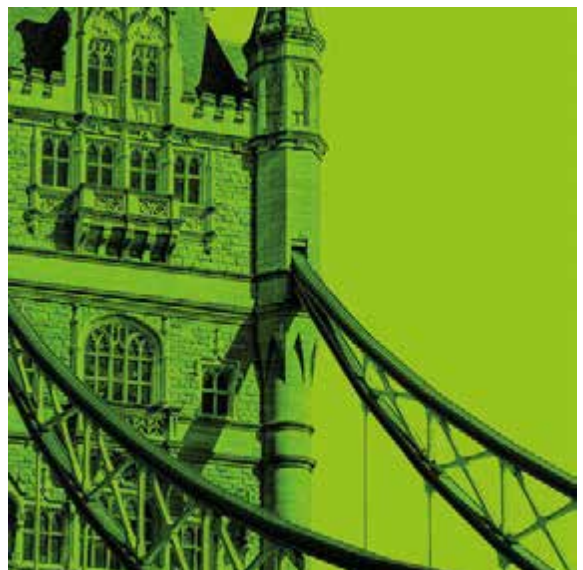
GCL: RL24857 (Ratio 1:1)



GCL: RL24858 (Ratio 1:1)



GCL: RL24859 (Ratio 1:1)



GCL: RL24860 (Ratio 1:1)



GCL: RL22400 (Ratio 1:1)



GCL: RL22401 (Ratio 1:1)



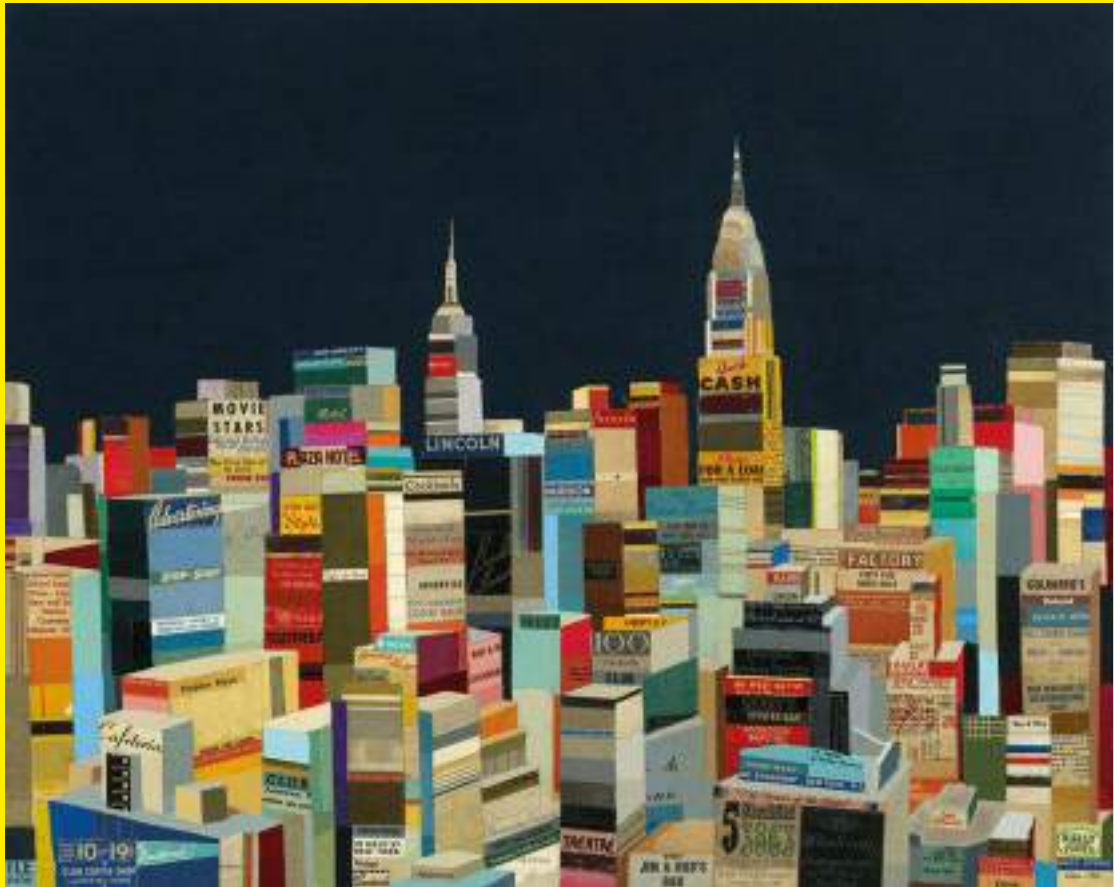
GCL: RL22402 (Ratio 1:1)



GCL: RL22403 (Ratio 1:1)



GCL: RX85574 (Ratio 3:2)



GCL: RH1047 (Ratio 5:4)



GCL: RH0243 (Ratio 5:4)

ROSENSTIELS PRODUCT GUIDE - KEY

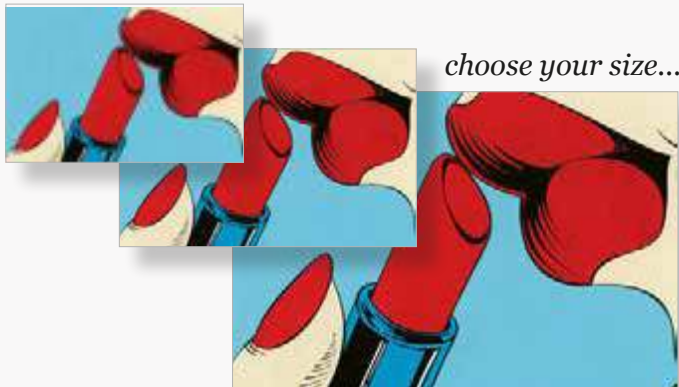
Symbol	Full Title	Description
OE:	Open Edition	Images are available on paper and in a specific size.
GCL:	Giclée	Images are available on either paper or canvas and in a variety of set sizes.
DC:	Deluxe Collection	Images are available on heavy superior art paper using the Gouttelette® process and in a specific size.
SEC:	Superior Edition Collection (Fine Art Editions)	Images are available on heavy superior art paper using the Gouttelette® process and in a specific size with a certificate. Both the print and the certificate are hand- numbered, but these are not Limited Editions.

N.B. These recommendations are a guide only. We are able to customise many images to meet specific sizes, colourways or substrates.

A VISUAL GUIDE TO PRINT ON DEMAND

Nearly all our collection is available as **Print on Demand** for both paper and canvas. You can have your chosen artwork to any size or crop. Check the image page on our website for availability and click on Print on Demand to choose your size.

Example Image



choose your size...

or choose your crop...



For any special projects (crops, colour changes etc) please contact us.

PRINTING

Rosenstiels, combines huge technological developments in the printing world with the traditional expertise and years of training of our own craftsmen. This allows us to print reproductions of the very highest quality and fidelity to the original, using only the best papers and inks.

The Master Printers



HOW TO ORDER GICLÉE PRINTS

5 EASY STEPS

Example Image



1. Choose your image
2. Note the image Giclée reference and ratio
3. Choose the print size you would like from our Giclée Guide (*opposite*)
4. Add the corresponding end code to the Giclée reference *e.g.* A2
Choose your substrate (*Paper or Canvas*)
5. Use the reference to place your order at sales@rosenstiels.com

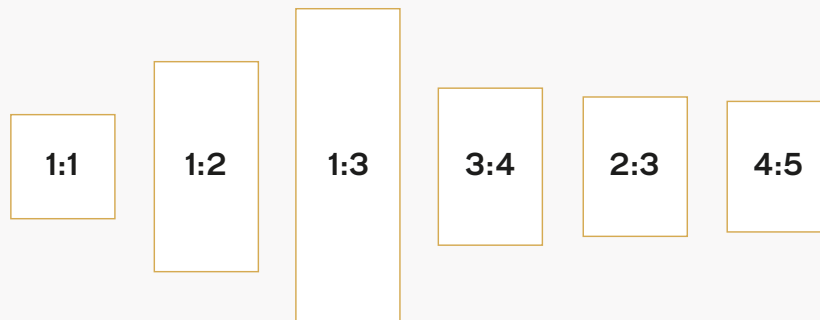
GCL: RL22759 (Ratio 1:1)

The custom Giclée reference to order the example image as a 20 x 20 in canvas print would be:

RL22759 - A2 Canvas

A VISUAL GUIDE TO RATIOS (WXH)

All images can be portrait or landscape (*except for squares*)



A VISUAL GUIDE TO CANVAS WRAPS

We can offer 4 different types of finishing for the canvas border;
Museum being the standard. Borders are 2 in (5 cm).



Museum (standard)
A white border around the image.



Colour Wrap
A chosen colour around the image.



Mirror Effect
Flipped version of the edge of the image.



Gallery Wrap
Enlarge the image to cover the border.

*All examples shown here are available on request.
Please note canvases are shown stretched for illustrative purposes only. We supply canvas unstretched.*

Giclée Guide

Rosenstiels has some 20,000 Giclée prints in stock for immediate shipping. Giclée prints are available in multiple sizes on paper or canvas. This process provides you with a selection of affordable prints at an outstanding quality.

Ratio	Sizes Available <i>(The underlined size is the exact size.)</i>	End Code
1:1	<u>16 x 16 in</u> – 40 x 40 cm <u>20 x 20 in</u> – 50 x 50 cm <u>24 x 24 in</u> – 60 x 60 cm <u>30 x 30 in</u> – 75 x 75 cm <u>36 x 36 in</u> – 90 x 90 cm <u>12 x 12 in</u> – 30 x 30 cm	A1 A2 A3 A4 A5 A6
1:2	<u>12 x 24 in</u> – 30 x 60 cm <u>24 x 48 in</u> – 60 x 120 cm <u>36 x 72 in</u> – 90 x 180 cm <u>20 x 40 in</u> – 50 x 102 cm	B1 B2 B3 B4
1:3	<u>8 x 24 in</u> – 20 x 60 cm <u>12 x 36 in</u> – 30 x 90 cm <u>16 x 48 in</u> – 40 x 120 cm <u>20 x 60 in</u> – 50 x 152 cm	C1 C2 C3 C4
2:3	<u>20 x 30 in</u> – 50 x 75 cm <u>24 x 36 in</u> – 60 x 90 cm <u>48 x 72 in</u> – 120 x 180 cm <u>32 x 48 in</u> – 80 x 120 cm	D1 D2 D3 D4
3:4	<u>18 x 24 in</u> – 45 x 60 cm <u>24 x 32 in</u> – 60 x 80 cm <u>30 x 40 in</u> – 75 x 100 cm <u>36 x 48 in</u> – 90 x 120 cm <u>12 x 16 in</u> – 30 x 40 cm	E1 E2 E3 E4 E5
4:5	<u>16 x 20 in</u> – 40 x 50 cm <u>22 x 28 in</u> – 56 x 71 cm <u>32 x 40 in</u> – 80 x 100 cm	F1 F2 F3

Giclée - Paper

Paper Giclées are offered full bleed (no white border).

Giclée - Canvas

Size selected is face size plus canvas wrap options.

Important Information

A choice of different sizes are offered for each “Ratio” as shown in the table above.

To order, add the corresponding “End Code” to the Giclée Reference, plus the substrate and any extra requirements.

Canvas Wrap Options

Finish	Border	Additional Material <i>(included in the price)</i>
Museum (standard)	2 in (5 cm) white border	½ in (1.2cm) of plain canvas
Colour Wrap	2 in (5 cm) border	½ in (1.2cm) of plain canvas
Mirror Effect	2 in (5 cm) border	½ in (1.2cm) of plain canvas
Gallery Wrap	2 in (5 cm) border	½ in (1.2cm) of plain canvas

ROSENSTIELS

LONDON — 1880

About Us

Rosenstiels is one of the World's leading Publishers of Fine Art Prints and Posters, supplying to a wide variety of trade customers in over 100 countries around the world.

Since its foundation in London (1880) by Felix Rosenstiel, each successive generation of Felix's family has assumed control of the company, with a continuing commitment to quality, service and integrity.

We believe in personal relationships and we support our customers in every possible way, for any size of project. Over the years, our reliability and dedication to quality has won us many prestigious awards as we celebrate our 140th anniversary in the art industry.

Our Values

Flexibility, reliability and efficiency have always been the three components of our success. We produce quality products at competitive prices and we always deliver in accordance with our commitment to our customers.

We understand that in our industry, some decisions have to be taken quickly and always with total confidentiality. We are able to react very promptly in both design and production at every stage of the process.

Our dynamic Design Team has years of collective experience in every aspect of the industry. We take pride in attention to detail and ensure that everything we create and supply is accurate to our customer's requirements. We understand that each customer is unique and we are responsive to their diverse and specific requirements.

We work with an ever increasing family of artists based throughout the World, who work with us both proactively and in some cases reactively.

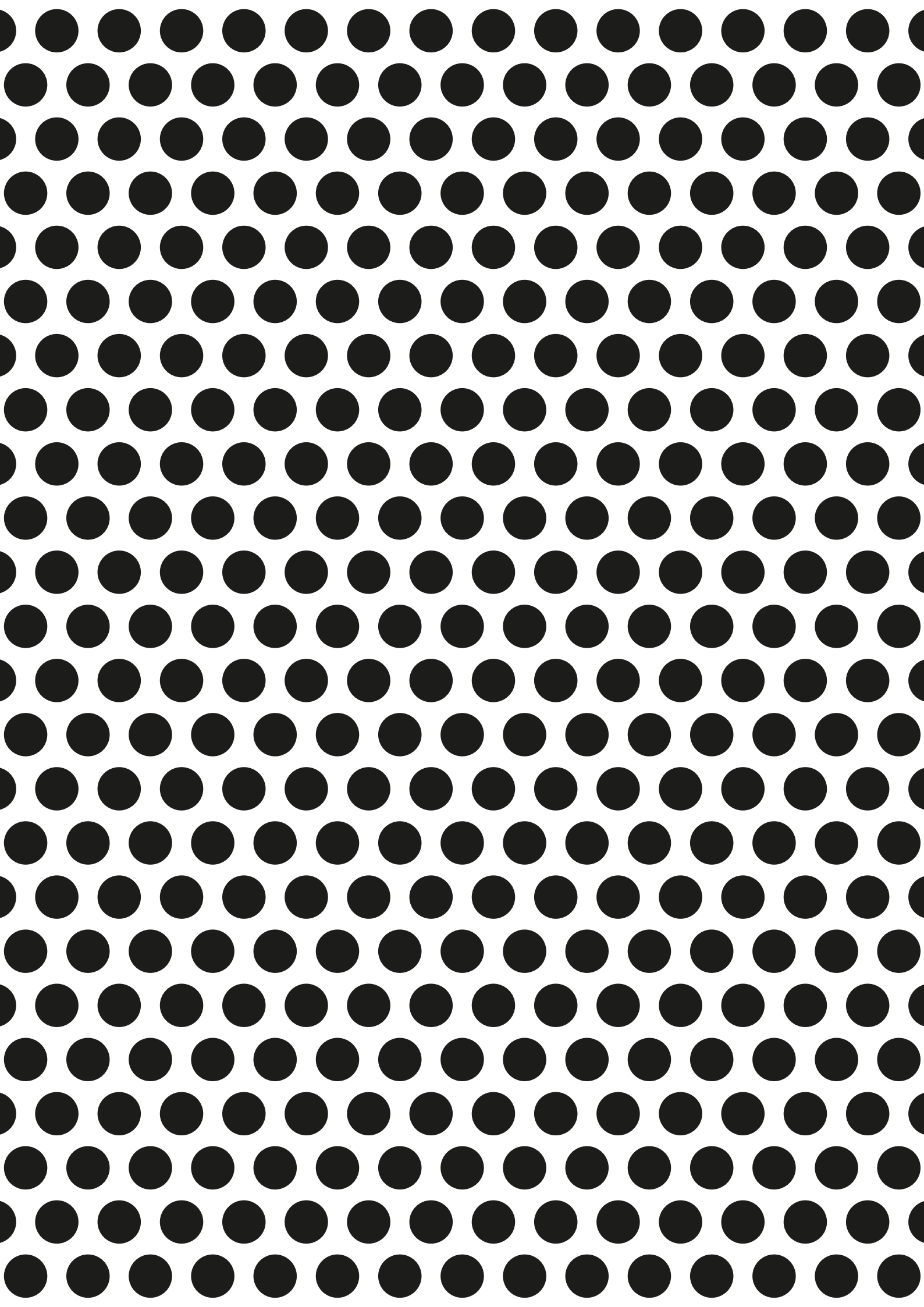
Location

Our Head Office is based in the Chelsea area of London, a renowned and historic place for arts and the home to many interior designers and creative companies.

Our Distribution Centre and printing facilities are located some 15 miles from Central London, where the Company commits to running an environmentally friendly policy.

WWW.ROSENSTIELS.COM

Art of distinction





33-35 Markham Street
Chelsea, London
SW3 3NR, England

+44 (0)20 7352 3551
sales@rosenstiels.com
www.rosenstiels.com